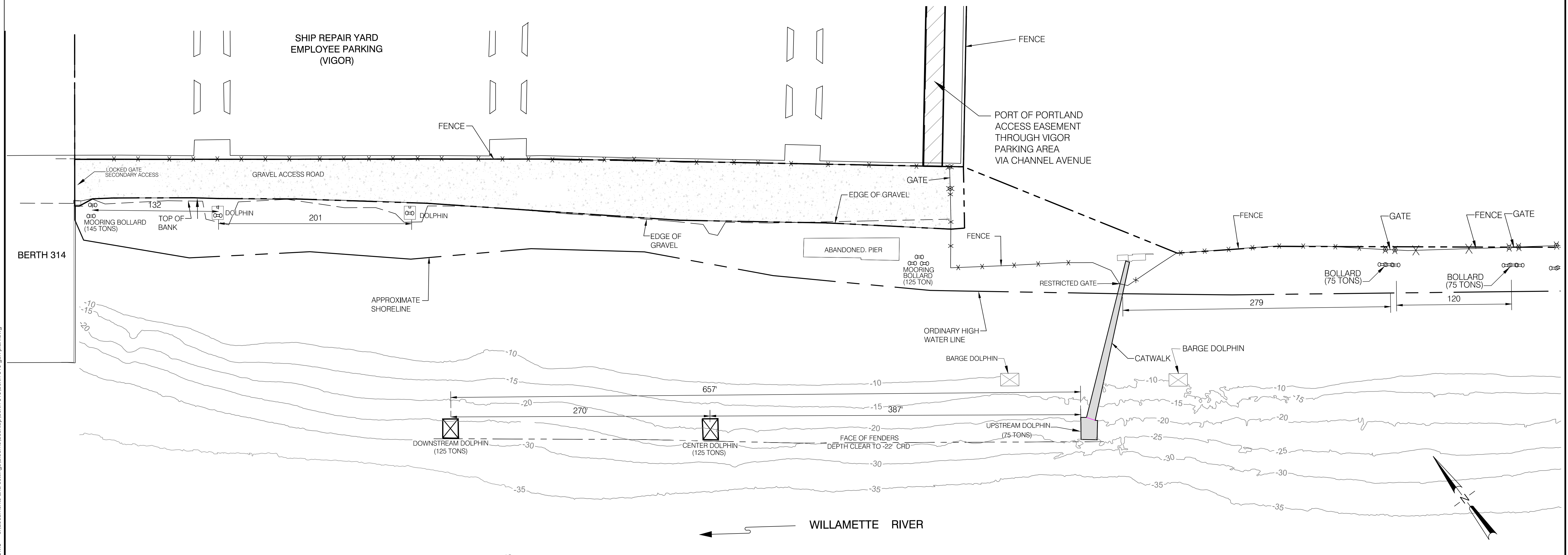
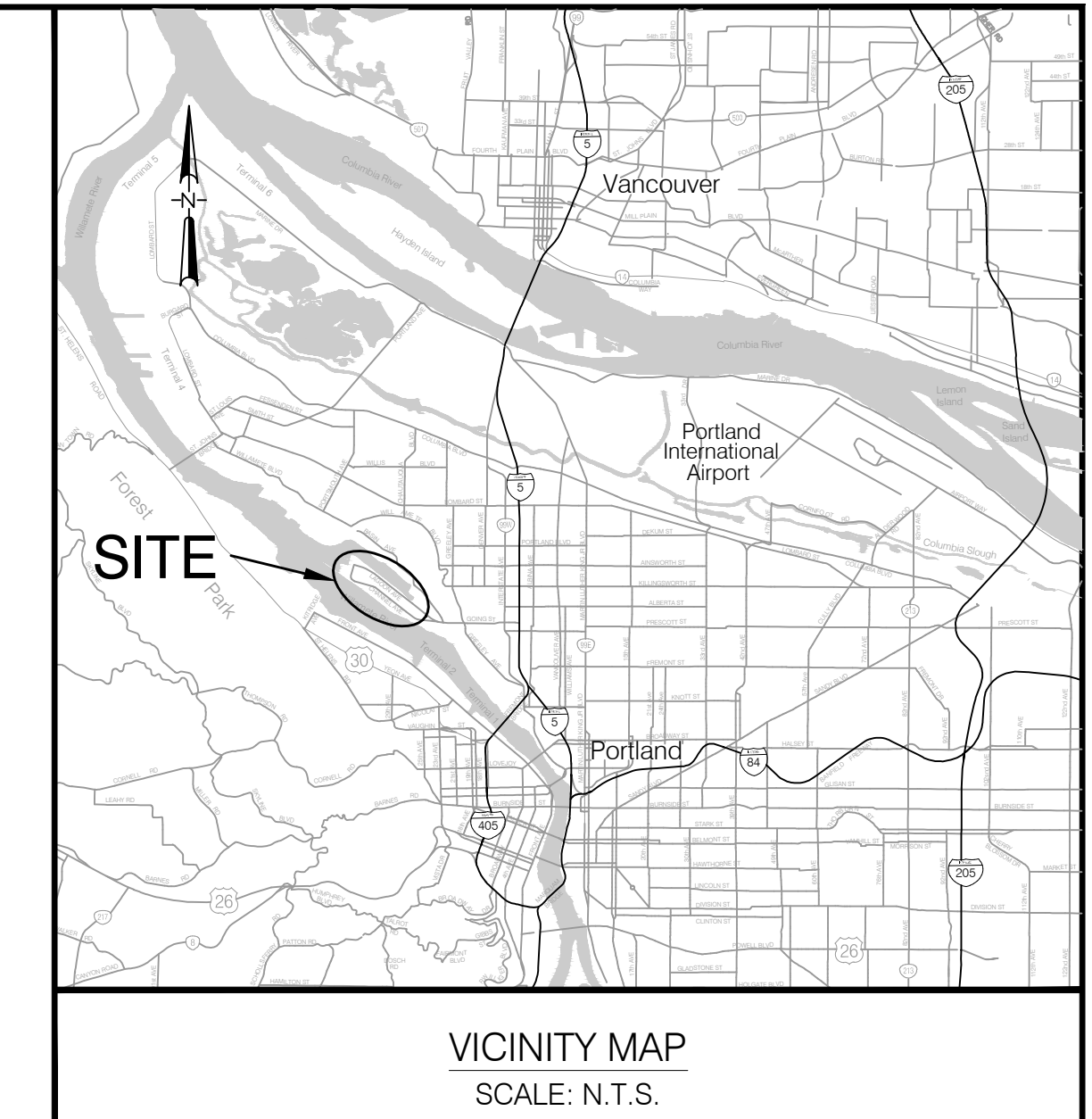
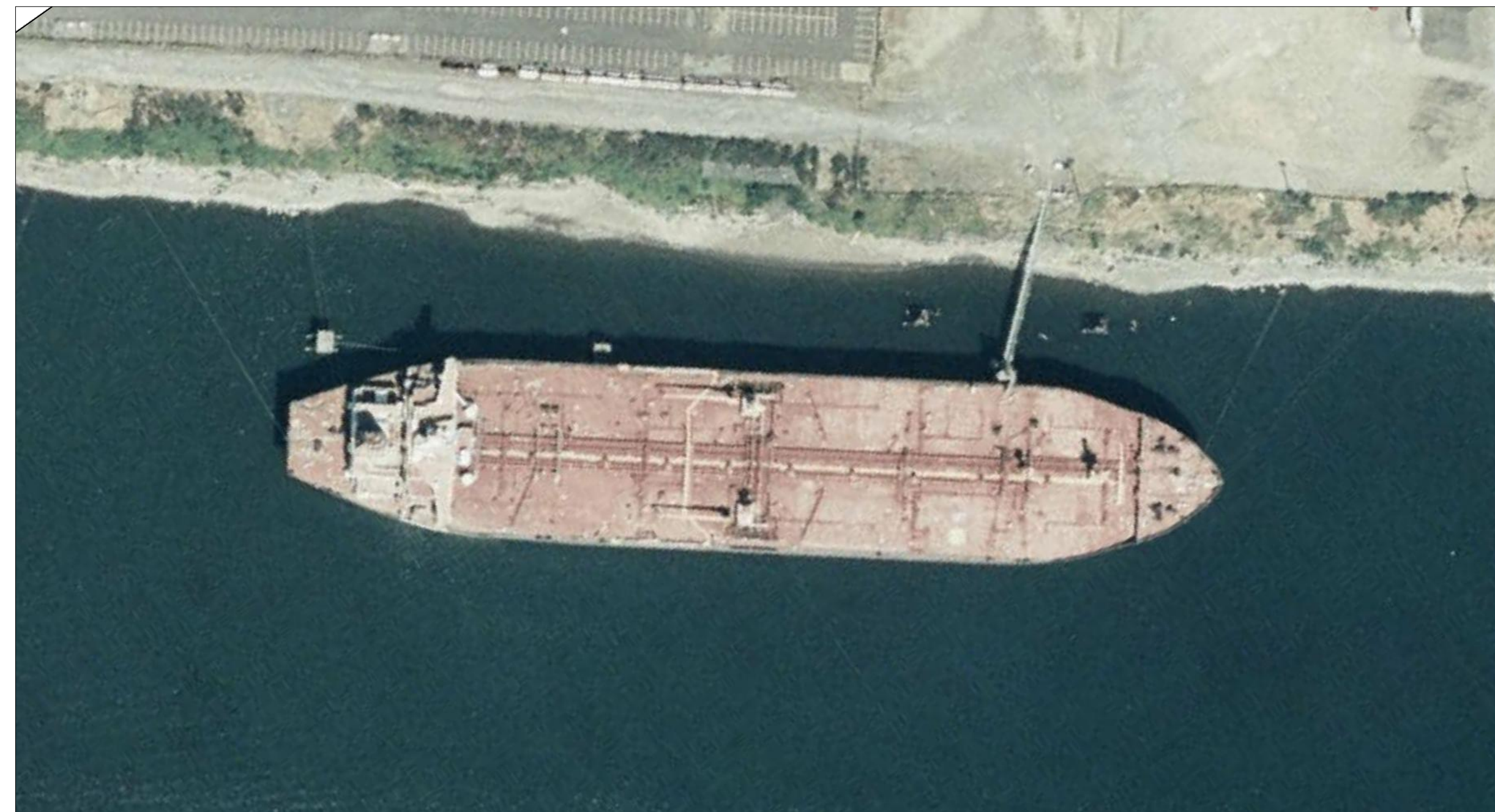


BERTH 315:

City: Portland, Oregon.
County: Multnomah County
Location: River Mile 7.8, right bank of the Willamette River
Purpose Of Berth: Lay Berth For Vessels and staging for Ship repair.
Manager: Port Of Portland
Contact: Jeff Krug- jeff.krug@portofportland.com
Phone: 503-978-2415
Fire Protection: City of Portland
Electric Power: (2) Metered 480V/400 AMP service is available.
Sewer: Sewer hook ups are not currently available.
Water: Water service is available. City of Portland supplies water.
Berth Depth: -22 feet Columbia River Datum (CRD)

Access: Berth 315 is accessed directly from Channel Avenue.
Summary: Berth 315 is a fenced facility with locked gates. The Port can provide negotiable short/long term rates for lay berth vessels. The downstream dolphins are located 390 feet and 270 feet from the downstream end of the catwalk for personnel access during lay berth operations. The upstream bollard is located 280 feet from the catwalk.



5/16/2013 9:40:14 AM BLOOMIS c:\documents and settings\bloomis\desktop\berth 315\berth 315 gen plan.dwg

PORT OF PORTLAND PORTLAND, OREGON										DESIGNED BY _____		SWAN ISLAND	
2012UGEN DESIGN NUMBER										DRAWN BY S. BLOOMQUIST		BERTH 315 SHIP REPAIR YARD GENERAL ARRANGEMENT PLAN WITH PLA	
1111 PROJECT NUMBER										CHECKED BY J. KRUG		SUBMITTED BY LORALI REYNOLDS MID PROPERTY MANAGER	
DATE MAY 2013										DATE MAY 2013		TYPE PD	
SCALE 1"=50'										DRAWING NO. SI 2012-		1/1 (SU-1)	