

Kiosk Provides Early Taste of Future Brewpub

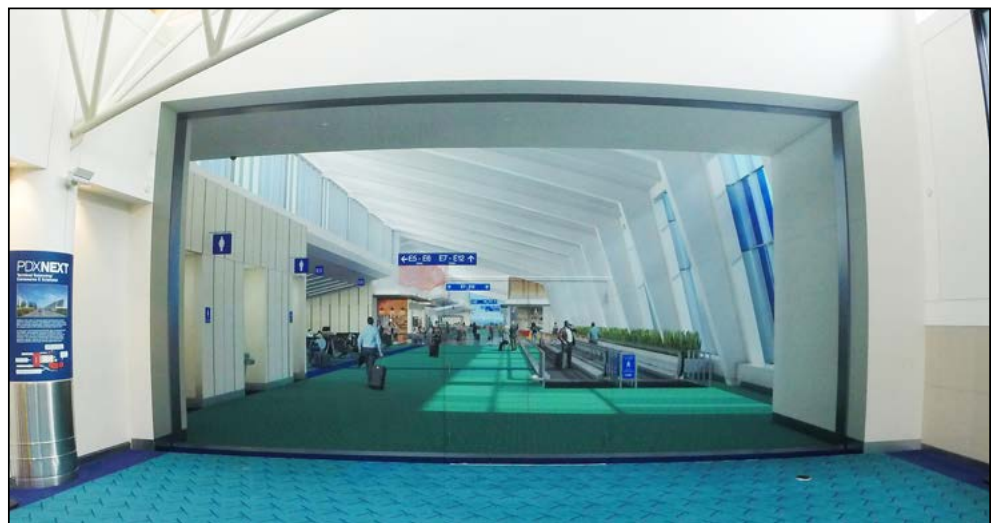


Can't wait until Deschutes Brewery opens at PDX this June? Good news – we just opened a temporary kiosk on Concourse D serving “grab and go” sandwiches, salads, snacks and drinks along with four taps of Deschutes beer and a selection of wine. Hours are 5 a.m. to 11 p.m. every day.

Prefer pad thai? Also in June, former food cart favorite Bangkok Xpress returns to Clocktower Plaza in the dedicated restaurant space next to Petite Provence.

See the Future Today on Concourse E

You may have noticed a new wall on Concourse E, designed to give travelers a glimpse of the future. Part of the PDXNext suite of projects, Concourse E will be extended by about 830 feet and will feature six new gates. For a look at how the wall went up, watch the video at bit.ly/ConcourseETimelapse.

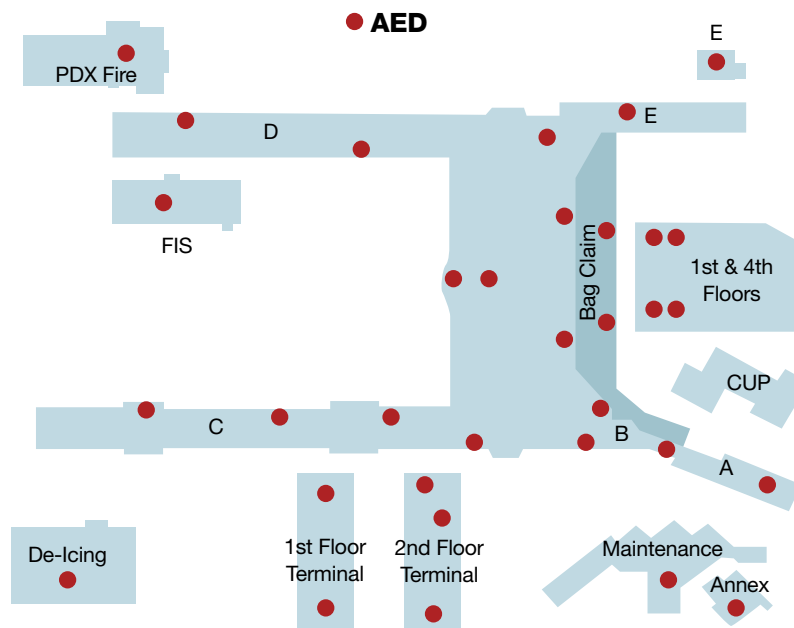


Heart Month Provides Perfect Opportunity for CPR, AED Training



Imagine for a moment that a traveler had a medical emergency nearby – would you know how to help? Take advantage of Heart Month in February, the perfect time to get up to speed on important resources available right here at the airport.

Our Portland Airport Fire & Rescue team regularly offers classes in CPR and how to use an AED – the portable electronic device that automatically diagnoses life-threatening cardiac arrhythmias and treats them through defibrillation, allowing the heart to reestablish an effective rhythm. The three-hour American Heart Association course is offered year-round, several times a month in the fire station training room; register by contacting Lani Hill at 503.460.4619.



Even if you're not trained in CPR, anyone can use an AED by following the simple audio and visual commands on the machine, so take a moment to familiarize yourself with this AED map. Remember, more than 360,000 out-of-hospital cardiac arrests occur each year in the United States – immediate CPR and use of an AED can more than double a victim's chance of survival.

Escape Winter Weather with New Service to Mexico City, Maui

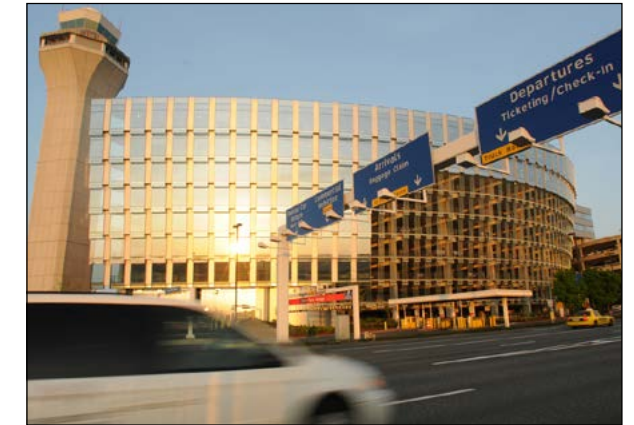
In December, Aeromexico Airlines launched a daily nonstop flight from PDX to Mexico City, kicking off the new service with a *gran fiesta*. The special event featured music by Mariachi Viva Mexico, as well as Daniel Huerta and Isabel Sanchez's traditional Mexican churros from their Churros Locos cart. Aeromexico operates its main hub out of the Mexico City International Airport and our new red-eye flight is conveniently timed for seamless connections to cities in Central and South America and the Caribbean.

No passport is needed for another new fair weather flight – Hawaiian Airlines to Maui. The service kicked off in January and uses the airline's brand-new, state-of-the-art A321neo aircraft, designed to reflect an authentic Hawaiian feel, from the LED lighting that mimics Hawaii's tropical sunrises and sunsets to the materials inspired by traditional bark cloth (kapa) and fishing nets.



Take Our Airport Signage Survey!

As someone who navigates the airport every day, you likely have thoughts on our signage. If so, now's the time to share them! Head to www2.portofportland.com/survey_01 and tell us what you think about wayfinding at PDX from roadway to runway by Wednesday, Feb. 7.



Customer Compliments

“Goldilocks might say it like this: Not too big, not too small, friendly staff and the traffic is managed decently. I enjoy PDX and the friendly people that make it a more enjoyable experience!”

Jennifer L., East Bay, Calif.

Did You Know?

The Oregon Department of Transportation is improving operations and safety on Interstate 205 between Johnson Creek Boulevard and the Glenn Jackson Bridge. Work includes paving the freeway, ramps and intersections; building auxiliary lanes; installing ODOT RealTime signs; and improving sidewalk curb ramps. Learn more about traffic impacts and closures to lanes, on-ramps and off-ramps at i205construction.org/glennjacksontojohnsoncreek.

Subscribe to PDxaminer online

Go to <http://www2.portofportland.com/Inside/PDxaminer>; then click on “Sign Up Now.” Fill out the simple registration form, selecting “News for Airport Employees” from the list of topics.

Airport Orchestra Makes Beautiful Music on Social Media



An airport is like an orchestra, where vehicles, bags, planes and people work in harmony to create a symphony of hands and wheels, hospitality and commerce.

Airport operations specialist Brian Burk went behind-the-scenes to create a series of five videos that show what it takes to make beautiful music for our more than 19 million passengers—a fifth consecutive annual travel record. The videos were a hit on Twitter and Facebook, with the finale racking up more than 12,000 views. See the PDX Symphony series for yourself at bit.ly/PDXSymphony.

3 Simple Shuttle Etiquette Tips

Even if you drive to work, you might find yourself taking the PDX employee shuttle to the terminal. Here are three easy ways to be courteous to your colleagues.

1. Wear headphones. Be respectful of those around you and either turn the volume off or plug in your headphones.
2. Give up your seat to those who need it. The first few seats on our shuttles are designated for people who need them the most. Be ready to stand if someone in need boards the bus.
3. Be aware of extra space. If the shuttle is empty, it's fine to set your bag on the seat next to you. When it starts to fill up, please put your stuff on your lap or on the ground by your feet.





Did You Know?

Delta Air Lines was recently named as one of the 2017 Best Workplaces for Diversity, an honor the airline also earned in 2016. Great Place to Work, a research and consulting firm, evaluated more than 50 elements of team members' experience on the job, including consistent treatment among employees of different backgrounds. The ranking also accounted for the share of women, people of color, Baby Boomers and LGBTQ individuals in the workplace.

PDXAMINER

Production Team: **Kelley Bonsall, Brian Burk, Steve Cowden, Steve Johnson, Jerry McCarthy, Jayson Shanafelt and Kama Simonds**
Editor: **Lise Harwin, lise.harwin@portofportland.com, 503.415.6060**

 Printed on recycled paper
100% post-consumer waste

 facebook.com/flypdx

 [@flypdx](https://twitter.com/flypdx)

 [@pdxairport](https://instagram.com/pdxairport)

 **PORT OF PORTLAND**
Possibility. In every direction.