

PORT OF PORTLAND

SUMMER 2015

PORTSIDE

A Port of Portland publication featuring news and information about airports, marine terminals, industrial parks and environmental programs.



Baaaa!
Bzzzz!
Balance.

3-5
Baaaa! Buzzz! Balance.

6-7
Summer Nonstop Destinations

8-9
Aviation News
New Dining and Shopping Options

10-11
Marine and Properties News
FedEx Expands at TRIP

12-13
Business and Environmental News
Small Business Support

14-15
A Year of Trade

U.S. HEADQUARTERS

Port of Portland
7200 N.E. Airport Way
Portland, OR 97218 U.S.A.
P.O. Box 3529
Portland, Oregon 97208 U.S.A.
T: 503.415.6000
TF: 800.547.8411 (U.S. only)
F: 503.415.6001

www.portofportland.com

OVERSEAS OFFICES

Tokyo, Japan
Masaaki (Masa) Mukouchi, Director, Japan
Lusis Bldg. 4th Floor
2-16-1, Higashi-Shimbashi,
Minato-ku Tokyo 105-0021, Japan
T: 81.3.3436.8351
F: 81.3.3436.8352
Email: masa.mukouchi@portofportland.com

Seoul, Korea

Jin Won (Jim) Kim, Representative
Ji Hyun Moon (Joanne), Adco
Suite 1507 Dongyang B/D,
Sokong-dong 112-6, Chung-ku
Seoul Korea 100-070
T: 82.2.753.1349
F: 82.2.753.5154
Email: portptldkorea@kornet.net

Hong Kong

Chris Chan, Representative
Sun Hing Shipping Co., Ltd.
10/F, United Centre,
95 Queensway, Hong Kong
Telephone: 852 3667 3382
Fax: 852 2754 4489
Email: chrishchan@sunhingholdings.com

Shanghai, China

Charles Wang, President
Zoey Zong, Representative
Port of Portland
c/o Global Goodwill Logistics Corp.
Cell 03, 7 Floor, Block C
Senling Real Estate
No. 469 Wu Song Road
Shanghai 200080, China
T: 86.21.6356.8969
F: 86.21.6359.8991
Email: zoey.zong@formosa.sina.net

Tianjin, China

Jackie Xu, Representative
c/o Global Goodwill Logistics Corp.
1-2202 R & F Center,
Jiangxi Road and Hefei Avenue Intersection,
Hexi District, Tianjin, 300230, China
T : +86-22-2319-3979
F : +86-22-2319-3980
E-mail : jackie.xu@formosa-tjj.cn

Taipei, Taiwan

Charles Wang, President
Ann Tseng, Representative
Formosa Transportation Co., Ltd.
12F, No. 164, Fu Hsing North Rd.
Taipei 104, Taiwan
T: 866.2.8712.8877
F: 866.2.8712.3600
Email: Margaret.wei@formosatwn.com.tw
Ann.Tseng@formosatwn.com.tw

PORT OF PORTLAND COMMISSION

Jim Carter • President
Paul A. Rosenbaum • Vice President
Peter Braggdon • Treasurer
Diana Daggett • Secretary
Thomas Chamberlain
Bruce Holte
Robert L. Levy
Linda Pearce
Tom Tsuruta

EXECUTIVE DIRECTOR

Bill Wyatt

DEPUTY EXECUTIVE DIRECTOR

Curtis Robinhold

DIRECTORS

Daniel Blaufus • General Counsel
Vince Granato • Chief Operating Officer
Keith Leavitt • Chief Commercial Officer
Kristen Leonard • Public Affairs
Cindy Nichol • Chief Financial Officer and
Director of Administrative Services
Bobbi Stedman • Human Resources
Stan Watters • Project and Technical Services

KEY MARKETING CONTACTS

Greg Borossay • Trade and Cargo Development
Email: greg.borossay@portofportland.com
Sebastian Degens • Terminal Business
Development
Email: sebastian.degens@portofportland.com
Jeff Krug • Autos, Bulks and Breakbulk
Email: jeff.krug@portofportland.com
Joe Mollusky • Industrial Properties
Email: joe.mollusky@portofportland.com
Martha Richmond • Corporate Communications
Email: martha.richmond@portofportland.com
David Zielke • Air Service Development
Email: david.zielke@portofportland.com

PRODUCTION TEAM

Max Beilenberg • Sherry Brookshire
Sebastian Degens • Steve Johnson
Jerry McCarthy • Martha Richmond
Michael Satern • Kama Simonds
Dorothy Sperry • Chris White
David Zielke

To request **PORTSIDE** information, please email
sherry.brookshire@portofportland.com.



Baaaaa!
Buzzzzz!
Balance.



The April sun shines down on a lovely pastoral scene. Under the watchful eye of their shepherdess, a herd of goats munches away at a large blackberry bush. In another area, not far away, sweetness is stacked: a collection of bee hives, thick with honey. There are native flowers here, and the bees buzz from one blooming plant to another, eating their fill. It seems like a moment borrowed from some other time or place, but the sights and sounds of the metropolitan area are close-at-hand. Strange as it may be, this is all taking place on Port property, close to the bustle and technology of a modern airport that connects businesses and travelers from around the globe.

The Goats' Invasive Feast

On April 13, 40 goats and a llama arrived at PDX to feast on the invasive blackberries, Scotch broom and thistle just outside the airfield fence line. Though at first glance an “only in Portland” caption might seem appropriate, organizations across the country – including airports such as Chicago O’Hare – have embraced goats for their environmental management needs. Their four-chambered stomachs and culinary curiosity allow goats to tackle invasive species and reduce the need for herbicide application or removal by hand in environments where it is difficult to bring in mowing equipment.

Plan Bee

Before there were goats at the Port, bees were all the buzz. The idea came to Tim Wessels as he perched on the hood of his car one night in 2012, watching the Perseid meteor shower out in Tygh Valley along with a few of his friends from the Port. Wessels – a retired Port employee, enthusiastic bee keeper and co-owner of local mission-driven business Bridgetown Bees – was fixated on two things. First, the Port owns a great deal of undeveloped and undevelopable land. Second, urban beekeepers are hindered by a lack of available

The Port's position as a large regional landowner presents an opportunity for leadership in successfully balancing economic growth and environmental impacts.



space and forage. Wessels realized the Port properties were a perfect location for Bridgetown to install hives.

The idea wasn't as strange as it might sound. Hamburg Airport installed the first airport beehive collection – or apiary – in 1999, with the intent of using pollen analysis to measure air quality. Today, airports such as Montreal, Seattle-Tacoma, Lambert-St. Louis International and Chicago O'Hare have all installed apiaries for different purposes.

Wessels and his business partner Glen Andresen are now entering their second summer breeding queen bees on Port properties. They plan to have around 40 hives active in the next few months. If they expand to the 75 hive limit allowed by their current permits, they would match Chicago O'Hare, which is widely acknowledged as the site of the world's largest airport apiary.

Long Live the Queen

Pacific Northwest beekeepers have an annual problem. Most queens die each winter. Beekeepers need to purchase new queens – mostly from Hawaii and Southern California – each spring. If queens die in the middle of a season, the amount of time it takes to order a replacement can be disastrous for the hive.

Wessels and Andresen aren't trying to produce commercially viable honey. They're experimenting with breeding resilient queens on Port land that are capable of overwintering. The queens will benefit from the relative open space of the undeveloped properties and have the chance to mate with feral bees that routinely overwinter.

Bridgetown Bees will send pollen and bee samples to Ramesh Sagili at the Oregon State University Honeybee Lab. There, the bees will be dissected and the pollen analyzed to help further understand what type of forage creates healthy bees.

If Wessels and Andresen are successful, their project will have positive economic and environmental effects. Local beekeepers will be able to purchase their queens from a regional source and – because they'll no longer need to acquire entirely new queens every spring – cut down on their costs.

In turn, this will increase the number and health of local pollinators, and have positive impact on ecosystem diversity and health that could extend throughout the Willamette Valley.

Enhancing Ecosystem Value through Research and Experimentation on Port Property

The use of goats and bees at Port facilities and properties are examples of the Port's willingness to experiment in its natural resources management, with the goal of establishing best practices that meet both the environmental and economic needs of the region.

The Port's position as a large regional landowner presents the organization with both responsibilities and an opportunity for leadership in successfully balancing economic growth and environmental impacts. The Port is often required to provide natural resource mitigation to offset environmental impacts that result from development and operations. However, the Port strives to exceed the standards set by regulatory requirements by enhancing ecosystem value through innovation and experimentation at mitigation sites and undeveloped properties.

The Port's Natural Resources Policy states that it "is committed to ongoing improvement of its Natural Resources Program through review, monitoring, and adaptive management, which uses science-based methods to provide information, evaluate programs and adjust further management actions accordingly."

Port employees utilize this adaptive management framework to test multiple resource management methods in real-world situations and hope to find the most environmentally-friendly, effective and economical solutions. Often, the learnings from one project spark ideas for future experimentation and implementation.

The results of these pilot projects will inform future management strategies on other undeveloped Port properties, and could be disseminated to the wider environmental restoration community through networking, conferences and workshops.

Restoring Government Island Pollinator Habitat

Another example of the Port's adaptive management techniques is its habitat restoration work with the Xerces Society on Government Island.

Sitting in the midst of the Columbia River only a quarter mile from the PDX airfield, Government Island is the site of an incremental 300-acre native prairie enhancement project that was mandated by the 2010 Airport Futures agreement with the City of Portland.



Port staff realized this was a rare opportunity to research the role of native forage in sustaining healthy pollinator communities. This led to a partnership with the Xerces Society, a well-known, Portland-based international invertebrate conservation organization that has worked on significant projects with partners such as General Mills and Whole Foods.

With the help of the Xerces Society, the Port selected a set of native plants with which to seed the first 50-acre plot starting in the fall of 2015. Hopefully, the plants selected and the increased ecological function resulting from this project will contribute to the health of the entire food chain, starting at its base with the pollinating insects. Native pollinators, rather than non-native honeybees are the focus.

According to Eric Mader, the Xerces Society's Pollinator Program Co-Director, "The Government Island grassland restoration represents the largest pollinator habitat restoration project that I know of connected with any airport in the world. The project is a significant model for what other airports could do."

Experimentation is at the heart of the process. The Xerces Society conducted a baseline habitat assessment and monitored the site for pollinator abundance and diversity in 2012. Once the project has been seeded, pollinator surveys will be conducted by Xerces annually for three years to track changes in the pollinator community after the enhancement has occurred. While traditional mitigation projects use only native plant reestablishment rates as a measure of success, the Government Island project goes a step further by also taking into account the health of pollinator populations. The learnings from the initial 50-acre seeding will inform the development of the remaining 250 acres, as well as future Port environmental management projects.

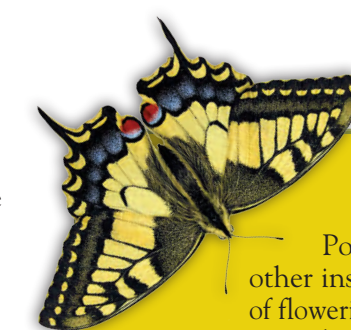
Port Properties as Laboratories: Wider Implications

For a metropolitan region projected to grow by up to 725,000 inhabitants by 2035, the findings from the Port's experimental land management initiatives have potentially important implications. More growth means that the natural resources so integral to Oregon's quality of life will need to be managed with extreme care and consideration. Plant and animal diversity will need to be safeguarded and encouraged as more lands come under management. In all of this, there is an important

stewardship role to be played by public agencies with large amounts of land to manage, such as the Port.

"In these projects, Port properties will function as a laboratory," explains Sean Loughran, long-range planning manager at the Port. "They'll inform our work in future mitigation and environmental management efforts. We hope to establish best practices that can be used for other Port development projects and, ultimately, be disseminated throughout the Willamette Valley."

by Max Bielenberg



Why a Focus on Pollinators?

Pollinators such as bees, butterflies and other insects are essential to the reproduction of flowering plants. Their benefits are economic, environmental and aesthetic. Oregon State Professor Ramesh Sagili estimates commercially pollinated crops in Oregon have an economic value of between \$500 and \$600 million. But there's a problem: many pollinators, including non-native honeybees, have experienced population decline in recent years due to disease, chemicals and habitat fragmentation.

A great deal of national attention has been paid to the recent drastic declines in honeybee populations. Less discussed is the decline of native pollinators, whose overall health is crucial to ecosystem function. Due to these declines, the Port of Portland is actively attempting to integrate habitat for native pollinators into its land management efforts. Because there is no clear-cut regional blueprint for how to accomplish this, Port staff are seeking effective solutions through an ongoing process of research and adaptive land management.



SUMMER

INTERNATIONAL DESTINATIONS

Vancouver, Canada – Air Canada, Alaska Airlines

Existing year-round service

For an international destination close-to-home, PDX travelers can experience the distinctive skyline and mountain backdrop of Vancouver, Canada's most densely populated city. The city's famous summer night markets give Portland's food cart pods a run for their money, and its impressive outdoor surroundings make for a vacation that combines the best in urban exploration and outdoor adventure.

Fun things to do: Eat in one of the world's most famous Chinatowns; go for a hike in the 1,001-acre Stanley Park



Tokyo, Japan – Delta Air Lines

Existing year-round service

Residents of Oregon and Southwest Washington looking for a modern megalopolis with a well-preserved past need look no further than Tokyo. The options for tourists are endless: visitors can encounter Japan's imperial history, partake in the bustle of the world's largest fish market and, of course, sample some exquisite sushi.

Fun things to do: Survey one of the world's great skylines from the observation deck of the Tokyo Skytree; find a moment of tranquility at the Shinjuku Gyoen National Garden

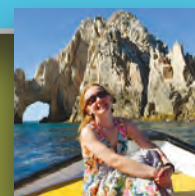


Los Cabos, Mexico – Alaska Airlines

Existing seasonal service November through April

PDX travelers can find their own bit of Baja bliss with a visit to Cabo San Lucas and its more laid-back neighbor San Jose Del Cabo. The cities are famed for their stunning beaches, coral reefs, sport fishing and exciting nightlife. Tourists can spend the day hiking in the Sierra de la Laguna Mountains and be back in time for a Pacific Ocean sunset.

Fun things to do: Take a boat to see the famous offshore rock formations; go sea kayaking at Cabo Pulmo National Marine Park

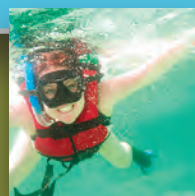


Puerto Vallarta, Mexico – Alaska Airlines

Existing seasonal service November through April

Located on the Bahía Banderas (Bay of Flags), Puerto Vallarta is an extremely popular destination for PDX travelers. First made famous by the 1964 John Huston film *Night of the Iguana*, the city features something for everyone: snorkeling, kayaking, high-end dining and shopping and – of course – lounging on the beach.

Fun things to do: Stroll the El Malecon boardwalk; take a horseback tour into the rugged Sierra Madre mountain range



Guadalajara, Mexico – Volaris

Existing year-round service

Renowned for its colonial and independence-era architecture, Guadalajara boasts some of Mexico's most vibrant summer festivals. Travelers can enjoy a torta ahogado (fried pork sandwich) and sip a horchata while soaking in the sights of Mexico's second-largest city.

Fun things to do: See the Renaissance-style Guadalajara Cathedral; purchase local handicrafts at the annual Fiestas de Tlaquepaque in June; sit back and enjoy the music in Mariachi Plaza



Frankfurt, Germany – Condor Airlines

New seasonal service from June 19 to October 6

Residents of the Pacific Northwest flock to Frankfurt, nicknamed "Mainhattan" for its signature skyline and location on the Main river. Travelers can journey from Europe's past to its future in the short walk from the Gothic Frankfurt Cathedral where Holy Roman Emperors were crowned to the European Central Bank in the heart of downtown.

Fun things to do: Try the city's most famous beverage at the Frankfurt Apple Wine Festival; see a performance at the iconic Alte Oper concert hall



Calgary, Canada – Air Canada

Existing seasonal service May through September
PDX travelers will feel right at home in Calgary, which boasts one of the continent's most extensive bikeway and pedestrian pathway networks. Travelers love the Stampede City's thriving downtown and its proximity to the recreational opportunities of the Canadian Rockies. Summer visitors can unwind at the Calgary Folk Music Festival or picnic at Prince's Island Park.

Fun things to do: Don't miss the 10-day Calgary Stampede rodeo, billed as "The Greatest Outdoor Show on Earth"

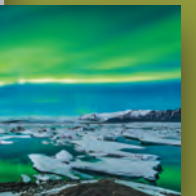


Reykjavik, Iceland – Icelandair

New seasonal service from May 20 to October 21

Reykjavik is the perfect summer stop-over for Pacific Northwesterners heading to Europe. Visitors can savor the 24 hours of sunshine in the world's northernmost capital, while partaking in the city's famed nightlife and unique culture. Outdoor adventure options abound: whale watching, hiking and riding Icelandic ponies are all popular pastimes.

Fun things to do: Enjoy a relaxing soak at the geothermal-heated Blue Lagoon; take a day trip to see the famous geysers and waterfalls of the Golden Circle

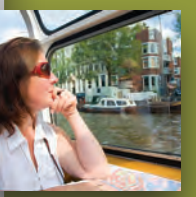


Amsterdam, the Netherlands – Delta Air Lines

Existing year-round service

The "Venice of the North" is a favorite destination for PDX travelers looking to experience some of Western Europe's most interesting history and culture. Visitors can stroll the famous canals and gardens, snack on patatje oorloog (fries with mayonnaise, raw onions and peanut sauce) or while away the hours in the city's numerous museums.

Fun things to do: Attend the Grachtensfestival in August, which features a series of concerts on boats and floating stages; spend an afternoon at the Van Gogh Museum



Whether you're looking to explore Old World architecture, get lost in the crowd in the world's largest city, or soak up the sun on Mexican beaches, PDX is your starting point. With PDX's nine new or existing nonstop international destinations, getting from here to there has never been easier.

Aviation



BLUE ANGELS HEADLINE AIR SHOW

The United States Navy Blue Angels will headline the 2015 Oregon International Air Show, July 17-19. This is the first time the Blue Angels will be at the airshow since 2007.

With new title sponsorship, the show will officially be called the Intel Oregon International Air Show Presented by Standard TV & Appliance.

"The Intel Oregon International Air Show has a strong history of presenting amazing performances, engaging Oregonians with aviation, technology and STEM [Science, Technology, Engineering and Math] programs, and supporting the nonprofit organizations that give back to our community," said Doug Fisher, Intel senior vice president and general manager of Software and Services Group.

The Washington County Bicycle Transportation Coalition will again host a bicycle parking area outside the Hillsboro Airport Terminal building. A welcome tent and bike racks will be available for arriving bicyclists.

Since 1988, the Air Show has donated more than \$1.4 million to 475 organizations. The show also hosts 800 special needs children and adults each year, providing free admission and lunch.

More information and tickets are available at www.oregonairshow.com.

PDX CARPET CONTINUES LEGACY

There has been much ado about Portland International Airport's nearly 30-year-old iconic teal carpet, which is currently being replaced. The carpet has become a social media phenomenon and has inspired a vast array of products containing its design.

But, beyond t-shirts, key chains, and stickers bearing the carpet's design, and above the coasters, floor mats, and wall hangings made from the actual carpet removed from the terminal, the PDX Carpet legacy lives on as it is honored in various community events and installations.

In March, the Portland Rose Festival named the PDX Carpet the Grand Marshal of the 2015 Starlight Parade. According to the Rose Festival, they made this selection, "as a tribute to the millions of travelers and visitors who have walked on the one-of-a-kind carpet, as well as to honor the thousands of airport workers who welcome people each day to the City of Roses."

In April, pieces of both the outgoing iconic carpet and the incoming new airport



The PDX Carpet served as the Grand Marshal for the 2015 Starlight Parade, followed by PDX employees.

carpet were placed inside the Pioneer Courthouse Square time capsule along with other items identified as best representing Portland in 2015. The capsule is sealed and slated to be opened at the Square's 50th Anniversary in 2034.

NEW DINING AND SHOPPING OPTIONS

Joined by the newest round of concessionaires at Portland International Airport, the Port of Portland hosted a grand opening celebration earlier this month to mark completion of phase one of the airport's concessions redevelopment.

Ten new shops and restaurants came online in early 2015, each with a 10-year lease. These leases are the first phase of refreshing PDX concessions, a process which will continue through 2017 as approximately 75 percent of existing leases expire. The second phase of concession redevelopment is currently underway with the late-spring issuance of the 2016 Concessions

Request for Proposal. This RFP is for 18 leases that will cover a total of 26 spaces slated for coffee, retail, and food opportunities. The Port Commission is scheduled to award leases to the successful proposers in December 2015, allowing for construction and openings in 2016.

The award-winning PDX concessions theme is based on offering the best of the Northwest in addition to popular national brands. The newest shops and restaurants include: Bambuza Vietnam Kitchen, Café Yumm!, a second cc McKenzie store, Henry's Tavern, Hissho Sushi, Metalsmiths Sterling, MOD Pizza, Mo's Seafood & Chowder, Potbelly Sandwiches, and The Country Cat. PDX currently offers travelers more than 60 shops and restaurants.

Additionally, this past spring, Airport Revenue News awarded House Spirits Distillery the 2015 Best New Specialty Retail Concept, Small Operator. The award recognizes the craft distiller's immersive retail experience at PDX, which includes a display of the very first pot still that House Spirits used when it started up more than 10 years ago.

PROJECTS IMPROVE PDX EFFICIENCY

Construction beginning this fall will improve the efficiency of Portland International Airport by helping balance the number of passengers using the north and south sides of the airport.

Currently, the largest two air carriers at PDX – Alaska Air Group and Southwest Airlines – are located on the south side of the airport terminal building, and two-thirds of PDX passengers are using the south side of the terminal.

To more evenly balance the number of passengers throughout the terminal building, construction work will first extend Concourse E by 210 feet, and construct new ground loading facilities. Those improvements will allow Alaska Air Group to move from Concourse A, B and C to Concourse E. United Airlines will move from Concourse E to Concourse C. Construction work will run through late 2017.

During this redevelopment, the Port will make every effort to minimize



Future of Concourse E serving Alaska Airlines flights.

construction project impacts to passengers and airport partners, while meeting all safety and security requirements.

The work is part of a suite of airport improvement projects collectively known as PDXNext. The projects are designed to continue providing award-winning comfort and convenience for travelers, operational efficiency, and safety and security.

INTERNATIONAL ARRIVALS SEE IMPROVED CONVENIENCE, COMFORT

Another project falling within the PDXNext portfolio is the remodeling of Portland International Airport's Federal Inspection Station, now renamed the International Arrivals Hall, to improve comfort and efficiency and provide a more welcoming environment for passengers arriving from international destinations.

The project will open up floor space, improve lighting, install new carpet, refresh painted walls, and add wall graphics. Upgrades will include new informational video monitors displaying state tourism destinations, and the installation of Wi-Fi. The improvements are planned for completion this fall.

Two new canopies are also planned later this year and will keep international travelers dry when boarding buses from the International Arrivals Hall to the baggage claim area.

In addition, new Automated Passport Control kiosks were recently installed, enhancing customer service and reducing wait times.

The eight self-service kiosks display 12 languages and help passengers clear U.S. Customs easily, securely and without preregistration. Instead of filling out a declaration card, travelers scan their passport and enter declaration information digitally. The kiosk then prints a receipt to present, along with the passport, to a U.S. Customs and Border Protection officer for verification.

ALASKA AIRLINES ADDS AUSTIN

Beginning Nov. 5, travelers headed to Austin, Texas from Portland International Airport will have the option of traveling nonstop year around aboard Alaska Airlines new daily flight.

The flight, operated for Alaska by SkyWest Airlines, is aboard new 76-seat Embraer 175 jets. It departs Portland at 9:50 a.m., arriving in Austin at 3:50 p.m. On the return leg, the flight departs Austin at 4:35 p.m. and returns to Portland 6:55 p.m. The E175 jet features 12 seats in first class and 64 in coach, and with cabin dimensions on par with a 737. Onboard amenities include Wi-Fi Internet access, streaming inflight entertainment and 110 volt power in every first class seat. Food and beverage will include hot meals and picnic packs for purchase, in addition to Northwest microbrews and wine.

"We're excited to add the Live Music Capital of the World to our growing list of destinations from the Rose City," said John Kirby, Alaska's vice president of capacity planning. For the business travelers, this flight will help connect key tech markets in the two states.

JOBS@PDX GOES LIVE

There is a new tool for workers seeking employment at Portland International Airport. Located on the Port's website, the new PDX Jobs board provides a way for PDX-based employers to post jobs, as well as a way for interested applicants to view those job openings and apply on-line.

One element of the initiative deals with the establishment of a labor pool for airport employees and that is just what the new jobs board is doing. The Port has also set up computers and workspace in the PDX Conference Center (located on the mezzanine in the Oregon Marketplace) where employees can access this employment information and apply for positions. To view this new resource go to <http://jobs.pdx.com>.

On April 8, the Port of Portland Commission adopted the PDX Workplace Initiative Principles. This initiative provides guidelines for job pathways, worker benefits, worker retention and employee/employer relationships at PDX. Designed to maintain an airport environment that is safe, convenient and free from service disruptions, the initiative establishes a labor pool for airport employees, creates a process to explore PDX worker benefits, and requires that PDX employers submit written plans describing how they will maintain positive working relationships with employees. (See complete story on page 12.)



Marine and Properties

CONTAINER SHIPPING SUPPORT

Marine container service is critical to Oregon and regional shippers. Prior to the withdrawal of Hanjin and Hapag-Lloyd container service, and temporary suspension of Westwood container service, more than 1,000 shippers from 31 out of 36 Oregon counties moved cargo through the Port of Portland's Terminal 6 container facility operated by ICTSI Oregon.

To support Oregon shippers, the Port is working with stakeholders on three initiatives to assist exporters and importers in getting their products to and from global markets in a cost-efficient manner until new service is established at Terminal 6.

Interim Container Solutions

In April 2015, Oregon Governor Kate Brown approved a Trade and Logistics Initiative – led by Business Oregon, Oregon Department of Agriculture, Oregon Department of Transportation and the Port – to find interim freight logistic solutions for Oregon small- and medium-sized exporters and importers impacted by the loss of container service.

The work is intended to ensure that these businesses stay competitive in the global marketplace, facilitate international trade in the state, and support longer term recruitment of new container service to Terminal 6 for the benefit of all shippers.

As part of this work, the state team is holding workshops with shippers and economic development partners around the state to identify and develop interim freight solutions to consolidate and move products to and from global markets. Information from these workshops, coupled with research on Oregon's import and export markets, will serve as the basis for recommendations on investments for consideration by the 2016 Legislature.

Container Service Recruitment

On a parallel path, the Port is working with the Terminal 6 operator ICTSI to actively market the terminal for new container service to Asia and Latin America, which is vital for Oregon. While regional cargo volumes continue to grow and will support Portland container operations, restoring service is a complex challenge and will likely require a great deal of time. The Port is diligently pursuing that goal.

Labor-Management

The Port and other stakeholders continue to support resolution of labor-management issues required to guarantee productivity at the



Principal of Capstone Partners Chris Nelson and Port of Portland Executive Director Bill Wyatt lead the grand opening celebration for PDX Logistics Center I. The facility is the first of a multi-phase, more than 1-million-square-foot, state-of-the-art logistics park in Portland International Center near Portland International Airport.

terminal necessary for the container service.

Those with questions about freight logistics can contact Robert Smith with the Port's Business Development group at Rob.Smith@portofportland.com, or 503-415-6218.

PORT WELCOMES DON GOLDBERG

Port of Portland welcomes Don Goldberg as its new general manager of business development. Goldberg will manage Port industrial business development and real estate marketing.



Goldberg has a deep background in real estate, having worked for more than 20 years in various positions in the commercial real estate and development industry. During the last seven years, he served as senior project manager in the Portland office of the Trust for Public Land, a national non-profit organization focused on acquisition and development of land for parks, open space and conservation. In that role, he was able to apply his private sector real estate knowledge and experience with the mission of a non-profit organization to put creative partnerships together with neighbors, environmental groups, private developers, land owners, and public agencies.

"Don's ability to work well with all stakeholders, and his belief in taking a holistic and balanced approach to development,

will serve us well into the future as we tackle complex issues in a way that is in alignment with the community," said Keith Leavitt, Port chief commercial officer.

As a community leader, Goldberg has also served on the Port's Marine Blue Ribbon Committee, assisting with creating a growth strategy for the marine business, as well as on the Board of the Intertwine Alliance, and on other various committees. Goldberg is available at Don.Goldberg@portofportland.com or 503.415.6080.

FEDEX EXPANDS AT TRIP

FedEx Ground is expanding at Troutdale Reynolds Industrial Park.

Port of Portland's recent sale of approximately 14.55 acres allowed for this key customer expansion and the continued redevelopment of the former Reynolds Metals Company brownfield site. The sale allows FedEx Ground, the anchor tenant at TRIP, increased package-handling capacity and efficiency at its Northwest regional hub in East Multnomah County.

FedEx Ground purchased an initial 77.93



acres from the Port in 2008 to construct the approximately 441,000-square-foot, state-of-the-art logistics facility that opened in 2010. FedEx Ground required additional industrial land to expand their facility to approximately 575,000 square feet.

The development of the first phase of TRIP was the result of significant cooperation between the Port, Alcoa, FedEx Ground, the city of Troutdale, the U.S. Environmental Protection Agency, and the Oregon Department of Environmental Quality. The project earned the Port, Alcoa and FedEx Ground the EPA's Phoenix Award in 2011 for the top brownfield redevelopment project in the nation.

The Port continues to work with state and regional partners on TRIP Phase 2 and 3 development to make the nine remaining lots development-ready and a regional asset for traded-sector development, producing higher wage jobs and tax base for the region.

PORT PURCHASES LAND ADJACENT TO HILLSBORO AIRPORT

Acting on a strategic opportunity, the Port of Portland recently purchased more than 46 acres of vacant land adjacent to Hillsboro Airport.



The property, previously thought unavailable, was the largest parcel of undeveloped land adjacent to the airport. Located at 25300 NW Evergreen Road near Northeast Brookwood Parkway, the site provides great access to downtown Portland. The property is zoned General Industrial and

its location, size, excellent road access, adjacent utilities, and adjacency to the airport are attractive features for development of both aviation and industrial uses.

Successful tech companies in the area include SolarWorld, Intel and Genentech. The Port will immediately begin marketing a portion of the property for industrial development, and will consider aviation development of the remaining portion of the property as part of the next Hillsboro Airport Master Plan update beginning in 2016.

The Port purchased the property from SolarWorld, the nation's largest manufacturer of silicon-based solar cells. SolarWorld recently announced a \$10 million expansion of its plant that will introduce 200 additional jobs to the market. As the expansion did not require the use of the land, SolarWorld made the property available for sale.

SEAPORT CELEBRATION AUGUST 15

Port of Portland invites you to go behind the scenes of Portland's thriving working waterfront and enjoy the popular, family-friendly summer event – Seaport Celebration.

Admission and parking are both free at the Aug. 15 celebration at the Port's Marine Terminal 4, 11040 N Lombard Street.



Join the fun at Seaport Celebration, Aug. 15.

Johnny Bregar, and The Alphabeticians; and

- Taste a variety of local flavors from some of Portland's top food carts, including Ash Wood Fired Pizza, the Burgerville Nomad, and Portland's iconic Voodoo Donuts.

Terminal 4 is located on the Willamette River in the St. Johns neighborhood. The 262-acre, multi-use terminal is home to a distribution center for Toyota, Scion and Lexus vehicles; liquid agricultural fertilizer imports for International Raw Materials; soda ash exports used in the manufacture of glass, and a flour mill.

More event details and directions are available at www.seaportcelebration.com.

Attendees can:

- Enjoy jet boat rides: \$5, kids; \$10, adults; 2-and-under, free (space is limited);
- Explore interactive exhibits and displays;
- Try welding and melting metal;
- Check out the kids' fun zone;
- Enjoy live music by Recess Monkey,

Business and Environmental

PORT SUPPORTS SMALL BUSINESSES

The Port of Portland's small business program presented impressive results to the PDX Community Advisory Committee on April 1. The program has four distinct initiatives that work to enhance opportunities for small businesses to successfully compete for Port public contract opportunities.

One of the four initiatives, the Mentor-Protégé program – has received widespread attention. The Association of General Contractors adopted it as a national model and the Federal Aviation Administration has identified it as a best practice.

The program matches participants with two established industry mentors and provides a business fundamentals curriculum that helps firms improve their operational and marketing capabilities.

The 10-member 2014-17 cohort has so far seen a 74 percent increase in revenue and the creation of six full-time and two part-time jobs. More than 96 firms have completed the Mentor-Protégé program since it began in 1995.

Essential to the program's continued success are strong partnerships with local businesses, as well with organizations such as



Bambuzza owners Daniel and Katherine Nguyen are one of the four new minority small businesses to open at PDX.

the Oregon Association of Minority Entrepreneurs, the National Association of Minority Contractors and the Airport Minority Advisory Council.

The Port's Small Business Development Program Manager Kimberly Mitchell-Phillips believes the Mentor-Protégé program, along with the Disadvantaged Business Enterprises and the Minority, Women and Emerging Small Businesses programs embody the Port's mission of regional economic stewardship and demonstrate a strong commitment to social equity.

"We're a huge neighbor in Oregon, and with that comes responsibility," Mitchell-

Phillips said. "We want to make sure everyone – regardless of economic status or racial and ethnic identity – has the chance to participate in the opportunities created by the Port."

PORT SELECTS STATE GOVERNMENT AFFAIRS MANAGER

Kathryn Williams, the Port of Portland's former business and rail relations manager, now serves as the Port's state government relations manager representing the Port before the Oregon Legislature and the executive branch, including the governor's office, state agencies, boards and commissions.

Before transitioning to her new role, Williams managed the development of several rail- and transportation-related initiatives, including the Port's involvement with the Columbia River Crossing project.

Prior to joining the Port, Williams was an associate at the regional public affairs consulting firm, Imeson & Carter, and spent more than a decade working on issues affecting the short line railroad industry, utilities, infrastructure companies and non-profit organizations.

"I am proud to have Kathryn serve in this new role with the Port," said Public Affairs Director Kristen Leonard. "She has done a stellar job over her first few months representing the Port's interests in Salem. Her grasp of the issues and ability to work to build understanding and consensus will ensure the Port can address important issues and opportunities at a policy level."

JOHN C. MOHLIS NAMED 2014 COMPASS AWARD RECIPIENT

John C. Mohlis, executive secretary of the Oregon Building and Construction Trades Council, was named the Port of Portland's 2014 Compass Award recipient at the Port's annual Gateway to the Globe event in April.

Mohlis has served with the Trades Council, an umbrella organization for approximately 30,000 union construction workers in Oregon, since 2010. Noted in the award presentation was Mohlis' key role in advocating for infrastructure and economic development policies and investments at the state and regional level that support middle wage jobs and training opportunities for Oregon residents.

"John has consistently offered vision, a balanced perspective and a unifying voice on

contentious issues," said Port Commission President Jim Carter. "He has graciously given of his own personal time and energy to help the Port achieve its mission."

Instituted in 2006, the Compass Award recognizes the contributions of community individuals and entities that have demonstrated exceptional support for the Port of Portland. Compass Award recipients serve as civic and/or corporate role models through their outstanding contributions to the Port and the communities it serves.

More than 400 business leaders, elected officials and community stakeholders attended this year's Gateway to the Globe event, which provides annual updates on Port activities, challenges and opportunities. The keynote



Port Executive Director Bill Wyatt (left) and Commission Chair Jim Carter (right) present John Mohlis with the Port Compass Award.

speaker for the event was Jerry Shoene, director of Ford Trading Company, Emerging Market Services. Shoene addressed Ford's decision to begin exporting Ford's to China and Korea through the Port of Portland.

KEEPING PDX A GREAT PLACE TO WORK

Portland International Airport is considered one of the best airports in America. Innovative programs such as local concessions, small business participation, local iconic brands that represent the region, and street pricing, set PDX apart and give a decidedly Portland feel. With this backdrop, the Port of Portland has been working to fine tune the balance between what makes PDX exceptional for customers and what will continue to make PDX a preferred place to work and do business.

On April 8, the Port Commission adopted the PDX Workplace Initiative Principles. This

initiative provides guidelines for job pathways, worker benefits, worker retention and employee/employer relationships at PDX. Designed to maintain an airport environment that is safe, convenient and free from service disruptions, the initiative establishes a labor pool for airport employees, creates a process to explore PDX worker benefits, and requires that PDX employers submit written plans describing how they will maintain positive working relationships with employees.

With the invaluable help of many airport stakeholders – PDX workers, businesses, concessionaires and other organizations – the Port was able to hear many perspectives and craft a plan to improve the PDX experience for workers and employers. "Special thanks go out to the many PDX workers and employers who took the time to attend Port Commission meetings and tell their stories," says Public Affairs Director Kristen Leonard.

In order to assist PDX employees with job pathways, the Port will establish a labor pool at the airport composed of airport workers who have lost their positions for various reasons. Monetary incentives are provided for employers who use the pool, with half that incentive going to the new employee. Certain airline service providers, third parties who contract with airlines for specific services, will be required to retain a minimum of 80 percent of their employee needs from qualified candidates of the departing employer and retain those employees for 60 days.

As the Port selects new vendors and renews contracts at PDX, those prospective vendors will be required to submit a written plan describing how they will maintain positive working relationships with employees. The plan may include any agreements and programs the employer uses to maintain a positive relationship with its employees, such as compensation plans, benefit offerings, incentive programs, education and training programs and advancement opportunities.

Over the next few months, the Port will consider ways it can further enhance the worker experience, focusing on those workers with the greatest need while also looking for opportunities to support the needs of businesses in attracting the highest quality workforce.

A PDX Worker Benefit Advisory Group will be established temporarily to discuss innovative new approaches to attract and retain the very best airport workers. This summer, the Port Commission will review the work of the Benefit Advisory Group and consider further action.

With this initiative, the Port hopes to enhance the worker experience at PDX.

DIY STORMWATER SOLUTION

A little bit of ingenuity and some inspiration from the Port of Vancouver, USA have the potential to help the Port of Portland improve stormwater runoff from buildings with metal roofs.

Two pilot Portable Media Filters, built by maintenance staff, have been installed at Portland International Airport to treat



New Portable Media Filters treat stormwater runoff.

stormwater runoff from the metal roof of an old cargo building. Still in the early stages of testing, the PMFs have shown positive results with the average concentration of zinc discharged reduced by more than 90 percent.

Pollutants in stormwater runoff such as zinc and other heavy metals can cause harm to fish and other aquatic life. Common sources of zinc include galvanized metal, such as metal roofs, dust from worn tires and brake pads, motor oil and hydraulic fluid. Stormwater at PDX discharges to the Columbia Slough, which then flows into the lower Willamette River.

Originally inspired by the Port of Vancouver's Grattix boxes, and modified by the Port, the filters are made out of 270 gallon food-grade plastic totes, which are filled with layers of material, including pea gravel, hardwood mulch, sand, compost and drain rock. Essentially a rain-garden-in-a-box, they absorb pollutants through filtration.

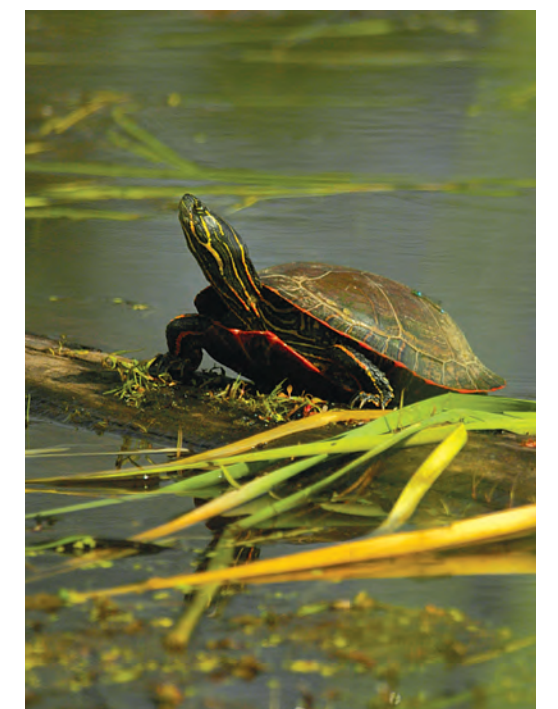
Engineered and constructed in-house with easy-to-find materials, the filters are an affordable and sustainable way for the Port to meet its water quality targets. Once testing is complete, Port environmental staff hopes the use of the filters can be expanded to other Port and tenant facilities to reduce water quality impacts.

CREATING TURTLE HABITAT

As part of the long-term natural resource enhancement commitments for Portland International Airport, the Port of Portland contributes \$30,000 per year to enhance habitat in the Columbia Slough watershed. Enhancement projects in this category have included tree planting, invasive plant removals and other restoration work. The PDX Community Advisory Committee, the standing group that advises the Port on sustainability at PDX, recommends projects for this annual funding.

In 2014, the PDX Community Advisory Committee recommended a multi-year project. This combined Turtle Habitat Enhancement Project is being designed to improve wildlife habitat through invasive species removal, native plantings, placement of large woody material, monitoring and education. Two areas have been identified for these improvements, which will span a two-year period: Buffalo Slough and East Whitaker Pond.

Turtles like to bask in the sun on protected pieces of wood. At Buffalo Slough, basking structures for turtles will be created with root wads and other large pieces of wood. Invasive species like yellow flag iris will be removed, upland nesting areas will be created and access to upland nesting sites will be improved. Work to improve habitat at East Whitaker Pond is underway, with native plantings installed last winter. Permits required for the Buffalo Slough work from federal, state and local regulators are in process and implementation is expected this summer.



The Year of Trade in Oregon has been a rousing success and programs continue through the end of the year.

Over the past few months, the Port of Portland and the Portland Business Alliance – in collaboration with other local agencies and businesses – have staged more than 35 local trade-centric events, seminars, trade missions, trade leader visits and other activities that highlight the importance of the state’s trade economy. The events also highlighted related issues such as the importance of a strong and efficient transportation system and technical-skills training programs that help workers fill middle-income

to a state that depends significantly on international trade; almost 89 percent of small- and medium-sized businesses in Oregon are exporting merchandise.

“We’re not going to be able to isolate ourselves from world markets,” President Obama remarked during a visit to the Nike campus in Hillsboro on May 8, bolstering support for international trade. “We got to be in there and compete. And the question is: are we going to make sure that the rules are fair so that our businesses and our workers are on a level playing field? Because when they are, we win every time.”

Another key area of focus is transportation infrastructure. To compete in markets overseas, Oregon’s exports require reliable, efficient and safe connections by road and rail to seaports and airports. However, road and rail infrastructure in Oregon – as well as in other states – is deteriorating as state and federal funding fails to keep up

• International trade generates nearly half a million jobs in Oregon and is a major economic growth engine for the state.

with maintenance and improvement needs.

“Access to markets via sky, water and land is also critical to Oregon businesses,” voiced Governor Kate Brown at the Oregon Consular Corps Celebrate Trade event on May 18. “I support improving transportation routes and modes so Oregon businesses are better able to engage international markets. This will ensure Oregon products and goods can be sold all over the world.” Congress is expected to debate a new surface transportation authorization bill this year, which should include a reliable, sustainable source of revenue for road and rail projects, and a funding program focused particularly on freight improvements.

For more information on trade in Oregon and to see future events in Oregon, please visit the 2015 Year of Trade website at www.tradeinoregon.com. Join the conversation on Twitter at [#tradeinOR](https://twitter.com/tradeinOR).



TRADE IN OREGON

jobs in a global economy. Complementing this effort is a statewide newsletter sent bi-monthly to nearly 2,900 recipients and a heavily-visited trade website.

One of the other important aspects of this year’s work is on trade policy advocacy.

Bringing Trade to the Table

The Port and trade partners continue to advocate for federal policies, legislation and international trade agreements that make Oregon businesses and employees more competitive in global markets. Such efforts are vital

“International trade is one of the ways we can build our economy. It is one of our region’s strengths, but that strength must be maintained and grown.”

Bill Wyatt, Port of Portland executive director
Gateway to the Globe • April 15



“We’re saying that we’re going to trade under a certain set of rules. And if we don’t create those kinds of rules, our companies are going to be at a competitive disadvantage in accessing markets like the growing middle class in Asia.”

U.S. Commerce Secretary Penny Pritzker
Visit to Leatherman Tool Group, Inc. • Feb. 18



“In order for our traded sector businesses to grow, they must continue to access new markets around the globe... 95% of the world’s consumers are located outside the U.S. The potential for economic growth through exports is great.”

Governor Kate Brown
Oregon Consular Corps Celebrate Trade Dinner • May 18



“We have to make sure America writes the rules of the global economy. And we should do it today, while our economy is in the position of global strength.”

President Barack Obama
Visit to Nike, Inc. Headquarters • May 8

CALENDAR

July

8

Port of Portland Commission Meeting
9:30 – 11:30 a.m. • Chinook Room
Port of Portland Headquarters

9

PDX Citizen Noise Advisory Committee
5:30 – 8 p.m. • PDX Terminal
St. Helens B Conference Room

17-19

Oregon International Air Show
Gates open at 6 p.m. on Friday
9 a.m. on Saturday and Sunday
Hillsboro Airport

18

Troutdale Summerfest
9:45 a.m. – 4 p.m. • Downtown Historic
Troutdale and Glenn Otto Park

26

Sunday Parkways
11 a.m. – 4 p.m. • Northeast Portland

August

8

Celebrate Hillsboro
9 a.m. – 4 p.m. • Downtown Hillsboro

2

Columbia Slough Regatta
9 a.m. – 1 p.m. • St Johns Launch
9387 N Columbia Blvd Portland

12

Port of Portland Commission Meeting
9:30 – 11:30 a.m. • Chinook Room
Port of Portland Headquarters

15

Seaport Celebration
10 a.m. – 4 p.m. • Terminal 4
11040 N. Lombard Portland

September

9

Port of Portland Commission Meeting
9:30 – 11:30 a.m. • Chinook Room
Port of Portland Headquarters

10

PDX Citizen Noise Advisory Committee
5:30 – 8 p.m. • PDX Terminal
St. Helens B Conference Room

Visit us online

There are several ways to follow the Port of Portland on social media – including the PDX Facebook page and the corporate Twitter account. Here is a full menu of all of the various channels the Port uses to keep the community up to date on Port events and activities:

Corporate Facebook: www.facebook.com/portofportland

PDX Facebook: www.facebook.com/flypdx

Corporate Twitter (@PortOfPortland): twitter.com/PortofPortland

PDX Twitter (@flypdx): twitter.com/flypdx

Bill Wyatt Twitter: twitter.com/bmwwyatt

Port of Portland LinkedIn: www.linkedin.com/company/165514

Port of Portland YouTube Channel: www.youtube.com/user/portofportland

Learn more about the Port of Portland at www.portofportland.com. Online newsletters are located in the Publications section of our website:

Port Currents – Community and Environmental news: www.portofportland.com/publications/PortCurrents/

Port Dispatch – Marine Marketing news: www.portofportland.com/publications/PortDispatch/

