

2018 PORT TRANSPORTATION IMPROVEMENT PLAN

DRAFT 1/10/2018

Acknowledgments

Port Transportation Team

Isaac Barrows
Steve Bloomquist
Emerald Bogue
Tom Bouillion
Mike Coleman
Lise Glancy

Phil Healy
Scott Kilgo
Sean Loughran
Dan Pippenger
Rob Smith
Kathryn Williams

Port GIS Team

Ryan Campbell
Chad Dettlaff
Sim Ogle

TABLE OF CONTENTS

Introduction	2
Goal and Objectives	3
Assumptions.....	4
Project Funding	4
Port Priority Projects.....	4
Cost Estimate Rating	9
Project List.....	10
Priority Project Map	22
Priority Project Reports	23
PDX/PIC Area Map	39
PDX/PIC Project Reports	40
Hillsboro Area Map	46
Hillsboro Project Reports	47
Marine Terminal and Rivergate Area Map.....	50
Marine Terminal and Rivergate Area Project Reports.....	51
T2/Swan Island Area Map.....	61
T2/Swan Island Area Project Reports	62
East County Area Map.....	64
East County Area Project Reports	65

INTRODUCTION

The Port of Portland's mission is to provide competitive cargo and passenger access to regional, national and international markets while enhancing the region's quality of life.

For the most part, the Port does not own or control the surrounding transportation system that provides access to its facilities.¹ Good access to Port properties and marine and aviation facilities is a competitive advantage for the region's businesses and residents. The region's economy depends on efficient movement to and through the marine and aviation gateways. Therefore, improvements to the road, rail, water and transit systems that provide access to Port facilities are of vital interest to the Port and to the region's and state's businesses.

Freight movement has historically played a large role in the development of the Portland area economy. Due to its location at the confluence of the Willamette and Columbia Rivers with access to the Pacific Ocean, Portland has long served as a major shipment point in the Pacific Northwest. In addition to the navigable waterways, Portland is also served by two Class 1 rail lines, two interstate highways and a network of other major roads. All of these factors contribute to Portland's development as a major distribution center for freight.

Several recent studies have substantiated the importance of investing in the transportation system and linked those investments to the region's and state's economic health. The Cost of Congestion to the Economy of the Portland Region (updated 2014), sponsored by a consortium of public agencies and private businesses, confirms the transportation dependency of the region's economy and affirms that the region's competitiveness is largely dependent upon its role as a gateway and distribution center. The study determined that improvements in the transportation system produce a 2:1 return for the economy.

The *Commodity Flow Forecast Update (2006)* produced by DRI/WEFA predicts a doubling of freight volume moving throughout the region in 30 years. This kind of growth will dramatically impact Port facilities and will require significant investments to ensure access to them. The magnitude of regional transportation access investments and their financing are addressed through Metro's Regional Transportation Plan (RTP), Metro's Transportation Improvement Program (MTIP) and the State Transportation

¹ Roads owned and maintained by the Port of Portland include:

NE Airport Way (between I-205 and the Airport terminal), 82nd Ave. (north of NE Alderwood Rd.), NE Frontage Rd., NE Mt. Hood Ave. (north of Airport Way), NE AirTrans Way, part of N Time Oil Rd., T-5 access road, T-6 access roads, old Marine Dr. (west of N Portland Rd.) and other misc. access roads.

Improvement Plan (STIP). Access needs critical to Port facilities are reflected in the Port Transportation Improvement Plan (PTIP).

GOAL AND OBJECTIVES

The Port Transportation Improvement Plan is a multimodal compilation of marine terminal, airport, road, rail, waterway, transit, bicycle, and pedestrian projects, normally identified through transportation and other studies managed by or in coordination with the Port. The plan also identifies a transportation demand management program to be implemented. The plan is designed to organize transportation and transportation-related improvement needs. The goal and objectives of the Port's Transportation Improvement Plan are as follows:

Goal:

Maintain the strategic advantage provided by the transportation system in this region by addressing the surface access needs of businesses and passengers trying to reach national and international markets via Port facilities.

Objectives:

- Identify 5, 10, and 20-year surface transportation system investments that provide and maintain access to Port facilities and property developments.
- Develop a long-range vision for the financial implications of transportation system investments, and integrate this long-range planning with the Port's 5-year capital program.
- Increase public awareness of Port access needs on the city, state and private rail carrier systems.
- Facilitate coordination between the Port and appropriate public and private transportation system stakeholders to make improvements and investments that enhance access to national and international markets for the region's businesses and residents.

ASSUMPTIONS

Contained within this document are projects generally developed from transportation studies based on the region's assumptions about population and employment growth. These assumptions, developed by Metro in cooperation with all the jurisdictions in the region, are allocated to the land use designations of locally adopted comprehensive plans. As population and employment assumptions are updated, the needs of the transportation system are updated. The Port and other local governments participate in transportation systems studies to determine what parts of the surface transportation system (road/transit/rail/bicycle/pedestrian) are insufficient to meet the regional assumptions about passenger and freight movement.

This document represents the Port's assessment of the transportation system and the infrastructure necessary in order to achieve its mission. The PTIP helps the Port focus its transportation priorities and lets the public and the Port's partner jurisdictions know which projects will need cooperative efforts.

PROJECT FUNDING

In recent years, the overall demand for transportation improvements at the local, state and federal levels has vastly exceeded available resources. The PTIP defines Port transportation needs over a 20-year time frame. Some of the transportation improvements are on Port properties, and some are on systems that are the legal responsibility of others but serve Port facilities.

Funding for projects in the PTIP is expected from a number of sources, including the jurisdictions that have legal responsibility for the system and private interests that may benefit from the improvements. The project detail sheets identify the funding sources anticipated to implement these projects. Funds attributed to specific jurisdictions reflect specific funding commitments. Funds designated as "Committed Port Share" are in the Port's approved budget. "Forecasted Port Share" indicates funds which the Port will obtain, whether from its own revenues or with funding from other sources. Where funds are listed as 'Unfunded', either a funding strategy has not yet been defined for the improvement, or changes in the project scope have impacted the existing funding strategy.

PORT PRIORITY PROJECTS

Port facilities support an array of transportation modes and present a wide range of project needs: marine and aviation terminal, road, rail, waterway, transit, bicycle and pedestrian improvements. The PTIP maps include surface transportation projects that improve or provide access to marine and aviation terminals. However, the ability of the marine and aviation terminals to provide the region's businesses with access to markets also depends on the transportation system within the terminal facilities themselves.

Many of the Port’s priority transportation projects will involve funding from other agencies and/or the private sector. A significant portion of these projects are off Port property on facilities owned and maintained by other jurisdictions and in areas that are significant transportation bottlenecks for access to national and international markets via Port facilities. Due to size, type and use of the facility, a cooperative funding arrangement among the affected parties will be necessary to adequately fund and implement these projects.

A subgroup of high priority projects deemed to be of strategic value for the Port has been identified to warrant focused attention for obtaining cooperative funding.

High Priority Projects Involving Other Funding Sources¹	Project Cost²	Map ID #
PDX NEXT	\$2,000,000,000	3
Cornfoot Road Multimodal Safety Improvements	\$3,708,539	5
T4 Berth 410, 411 Rail Yard Improvements	\$7,800,000	16
Terminal 4 Second Entrance	\$12,000,000	17

Notes: 1. Projects are not listed in order of priority.
 2. Refer to Priority Reports for funding break-out

Funded High Priority Projects Involving Other Funding Sources¹	Project Cost²	Map ID #
Rivergate Boulevard Overcrossing	\$19,549,000	21

Notes: 1. Projects are not listed in order of priority.
 2. Refer to Priority Reports for funding break-out

For surface transportation projects, the following criteria determine which projects have been considered for cooperative funding:

1. The project improves access to Port terminals or properties and is critical to Port strategic development in either a) the next ten years, or b) the next twenty years, with aspects of the project required to begin within the next ten years.
2. The project also serves other city, regional, state or national transportation and/or economic functions.
3. The project is included or, prior to construction, will be included in the Regional Transportation Plan (RTP).
4. The project meets the eligibility criteria for federal funding.

Priority Surface Transportation Projects Involving Other Funding Sources¹	Project Cost²	Map ID #
Cully Intersection @ Columbia Blvd.	\$6,575,000	2
82 nd Avenue/Airport Way Grade Separation	\$75,000,000	4
Sundial Road/Graham Road Signal	\$1,000,000	31
Intelligent Transportation System (ITS) Improvements	\$680,000	12, 14, 23

Notes: 1. Projects are not listed in order of priority.
 2. Refer to Priority Reports for funding break-out.

Funded Priority Surface Transportation Projects Involving Other Funding Sources¹	Project Cost²	Map ID #
Alderwood Intersection @ Columbia Blvd.	\$5,058,349	1
40 Mile Loop Trail: Blue Lake Park to Sundial Rd.	\$3,424,073	30

Notes: 1. Projects are not listed in order of priority.
 2. Refer to Priority Reports for funding break-out.

For priority marine terminal and aviation capital projects, the following criteria determine which projects have been considered for cooperative funding:

1. The project improves operation of Port terminals or airports and is critical to Port strategic development in the next ten years.
2. The project provides significant economic benefit to the region and state by a) improving market access for all terminal or airport users, or b) improving the operation of port tenant facilities that provide a significant number of jobs.

These projects are consistent with the Port’s adopted budget and long term capital forecast.

Priority Marine Terminal Projects Involving Other Funding Sources¹	Project Cost²	Map ID#
Barnes to Terminal 4 Rail	\$10,543,000	11
Terminal 4 Pier 1 Site Preparation	\$38,000,000	13
Columbia River Jetty Refurbishment	\$239,000,000	19

Notes: 1. Projects are not listed in order of priority.
 2. Refer to Priority Reports for funding break-out.

Priority Aviation Projects Involving Other Funding Sources¹	Project Cost²	Map ID#
HIO Relocate Charlie Pattern Landing Site	\$391,000	6
HIO Relocate Taxiway AA	\$7,300,000	7
TTD Reconstruct Runway 7-25	\$18,000,000	29

Notes: 1. Projects are not listed in order of priority.
 2. Refer to Priority Reports for funding break-out.

 **PROJECT REPORTS AND MAPS**

The following pages contain a list of all projects, followed by maps of project locations and individual project reports. The first map and group of reports are for *priority projects* in all locations. Following the priority projects are the other projects by area, along with area maps. It should be noted that the area maps include both priority and non-priority projects. The project reports include such details as a brief description, purpose, funding information, cost estimate rating, time frame, and strategic alignment.

Acronym Key:

PIC	Portland International Center
PDX	Portland International Airport
WHI	West Hayden Island
TRIP	Troutdale Reynolds Industrial Park
TTD	Troutdale Airport
HIO	Hillsboro Airport
GVBP	Gresham Vista Business Park

Time Frame:

Projects identified in the PTIP are shown as occurring in the 5, 10, or 20-year time frames. Projects within the 5-year time frame are expected to occur within the next five years. Projects within the 10-year time frame are expected to occur between five and ten years from the time of PTIP adoption. Similarly, projects within the 20-year time frame are expected to occur between 10 and 20 years from the time of PTIP adoption.

The time frames shown are estimates. The listing of a project in a given period does not ensure that it will be constructed in that time frame. Rather, projects will be constructed when transportation/business needs support them and when funding becomes available. For many projects, this need has already been identified. However, others depend on a variety of factors, including development at Port facilities and the changing challenges of the region’s transportation system.

Port Strategic Plan Alignment

The mission of the Port is to enhance the region's economy and quality of life by providing efficient cargo and air passenger access to national and global markets.

Critical to the Port's effectiveness in implementing its mission are the following strategic areas of focus.

- Provide leadership around regional transportation infrastructure
- Retain and grow key services (Aviation and Marine)
- Be a regional leader in industrial land acquisition and development
- Implement a Portwide environmental strategy that supports the Port's requirements, generates savings and maintains/builds regional credibility as an environmental steward
- Build a sustainable financial model
- Strengthen the Port's culture as a strategic asset

The project reports identify which of the strategic areas of focus the projects most closely align with. The first four areas of focus identified above are the primary categories of alignment. The following abbreviations of the above strategies are included in the project reports.

- Regional Leadership in Transportation
- Retain and Grow Key Services
- Regional Leadership in Industrial Lands
- Portwide Environmental Strategy

Cost Estimate Rating

When applicable, the project reports shown in the PTIP contain cost estimate ratings. The purpose of the rating is to provide those using the estimates with a qualitative measure of its precision for a project. Since the precision of an estimate is a function of the clarity of project scope (scope accuracy) and the level of effort expended to produce the desired estimate (engineering effort), the rating scale is designed to reflect both of these factors. Below are the definitions of each of these categories.

Scope Accuracy

Level 1

Project scope is defined.

Level 2

Project scope is conceptual. Scope lacks detail due to potential permit requirements; unknown project conditions; limited knowledge of external impacts.

Level 3

Project scope has limited detail.

Engineering Effort

Level A

Preliminary engineering has been performed. Technical information is available, engineering calculations have been performed; clear understanding of the materials size and quantity needed to execute the job. Schedule is understood; staff and permitting is fairly clear. Contingency generally ranges between 15% and 20%.

Level B

Conceptual engineering has been performed. Technical information is available, rough engineering calculations may have been performed, or similar information from previous similar work is compared and used. Contingency generally ranges between 20% and 30%.

Level C

No engineering has been performed. Limited technical information is available and/or limited analysis has been performed. Contingency generally ranges between 40% and 50%.

Note: Projects that are the responsibility of a private entity or are the responsibility of another agency generally are not given cost estimate ratings. The costs listed are for the year the estimate was done. Due to cost escalation and other factors the projected costs will vary over time.

PTIP MASTER PROJECT LIST

Map ID	Project Name	Project Description	Purpose	Time Frame (Years)	Total Cost	Priority	Area Map
1	Alderwood and Columbia Blvd. Intersection	Widen and signalize intersection on Columbia Boulevard at Alderwood Rd.	Provide transportation link to the cargo area located within the south airport area and to support Columbia Corridor freight movement.	5	\$5,058,349	<input checked="" type="checkbox"/>	PDX/PIC
2	Cully Blvd. and Columbia Blvd. Intersection	Widen and signalize intersection on Columbia Boulevard at Cully Blvd.	Provide transportation link to the cargo area located within the south airport area and to support Columbia Corridor freight movement.	5	\$6,575,000	<input checked="" type="checkbox"/>	PDX/PIC
3	PDX NEXT	Includes Terminal Core, Terminal Balancing, and PACR projects.	Expand airport capacity,functionality, and resilience.	5	\$2,000,000,000	<input checked="" type="checkbox"/>	PDX/PIC
4	82nd Ave./Airport Way Grade Separation	Construct grade-separated overcrossing.	Provide efficient movement of traffic to PDX properties.	10	\$75,000,000	<input checked="" type="checkbox"/>	PDX/PIC
5	Cornfoot Road Multimodal Safety Improvements	Provide a separated multi-use path on the north side of NE Cornfoot Road.	Increase safety and provide improved bicycle and pedestrian access along NE Cornfoot Road.	5	\$3,708,539	<input checked="" type="checkbox"/>	PDX/PIC
6	HIO Relocate Charlie Pattern Landing Site	Construct a new landing site for helicopters that use the Charlie flight pattern at HIO.	Serve helicopter training operations, and avoid operations over noise sensitive residential zones.	5	\$391,000	<input checked="" type="checkbox"/>	Hillsboro

Map ID	Project Name	Project Description	Purpose	Time Frame (Years)	Total Cost	Priority	Area Map
7	HIO Relocate Taxiway AA	Relocate Taxiway AA 122 feet to the east and extend from Exit A5 to Taxiway G.	Replace existing Taxiway AA with a new taxiway with the appropriate design separation from Taxiway A. Construct a perimeter road extension between Taxiway AA and existing tenant ramps.	5	\$7,300,000	<input checked="" type="checkbox"/>	Hillsboro
8	T6 Crane Drives for Cranes 6380 and 6381	Crane management system upgrades for Cranes 6380 and 6381.	Improve operational efficiencies for the container cranes.	5	\$2,000,000	<input checked="" type="checkbox"/>	Rivergate
9	T6 Auto Terminal	Pavement renewal, processing building, rail ramp and office.	Capture demand for mid level auto account.	5	\$35,000,000	<input checked="" type="checkbox"/>	Rivergate
10	T6 Berth 603 Low Dock	Modify existing berth for roll on-roll off (RORO) vessels.	Capture demand for high and heavy cargo.	5	\$8,000,000	<input checked="" type="checkbox"/>	Rivergate
11	Barnes to Terminal 4 Rail	Provide a new track from Barnes Yard to Terminal 4. Includes replacement of Lombard Bridge.	Improve rail access to Terminal 4.	5	\$10,543,000	<input checked="" type="checkbox"/>	Rivergate
12	Rivergate ITS	Intelligent Transportation System in Rivergate.	Improve traffic efficiency in Rivergate by connecting information about the roadway system to ODOT's Highway information systems.	5	\$480,000	<input checked="" type="checkbox"/>	Rivergate

Map ID	Project Name	Project Description	Purpose	Time Frame (Years)	Total Cost	Priority	Area Map
13	Terminal 4 Pier 1 Site Preparation	Remove Berths 405 and 408, the grain leg platform and tower, and the grain elevator in the Pier 1 area of Terminal 4.	This project will facilitate the redevelopment of approximately 30 acres of vital marine industrial property in the Portland Harbor.	5	\$38,000,000	<input checked="" type="checkbox"/>	Rivergate
14	Marine Drive ITS Improvement	Install a CCTV at Portland Road and changeable message signs at N. Portland Road, North Vancouver Way and NE 185th Drive.	Improve traffic efficiency in the Columbia Corridor.	10	\$200,000	<input checked="" type="checkbox"/>	Rivergate
15	T4 Pier 1 Tracks 704-709	Perform upgrades and rehabilitation on tracks 704-709.	Support rail car storage needs of Terminal 4 tenants	5	\$450,000	<input checked="" type="checkbox"/>	Rivergate
16	T4 Berth 410, 411 Rail Yard Improvements	Construct additional rail track in the Berth 410 and 411 Rail Yard.	Improve the efficiency of the rail yard by creating additional rail capacity.	10	\$7,800,000	<input checked="" type="checkbox"/>	Rivergate
17	T4 Second Entrance	Design and construct a second entrance to Terminal 4.	Support additional rail expansion at the terminal.	5	\$12,000,000	<input checked="" type="checkbox"/>	Rivergate
18	Terminal 5 Entrance Road	Provide secondary access road and rehabilitate existing pavement.	The project will address anticipated traffic needs.	5	\$1,058,122	<input checked="" type="checkbox"/>	Rivergate
19	Columbia River Mouth Jetty Refurbishment	With Jetty A now complete, refurbish and repair the north and south jetties at the mouth of the Columbia River.	This is a critical repair of the jetties at the Columbia River Bar.	5	\$239,000,000	<input checked="" type="checkbox"/>	Rivergate
20	Time Oil Road Reconstruction	Reconstruct Time Oil Road.	Provide improved access to South Rivergate industrial area.	10	\$9,000,000	<input checked="" type="checkbox"/>	Rivergate

Map ID	Project Name	Project Description	Purpose	Time Frame (Years)	Total Cost	Priority	Area Map
21	Rivergate Boulevard Overcrossing	Grade separate the South Rivergate Lead at Rivergate Blvd.	Improve rail and vehicle traffic flow in Rivergate Industrial District.	5	\$19,549,000	<input checked="" type="checkbox"/>	Rivergate
22	Terminal 2 Crane Upgrades	The project will modify and upgrade Cranes 2371 and 2372, located at Terminal 2. The improvements will increase the suitability and efficiency of the crane to handle bulk cargoes.	The improvements will increase the suitability and efficiency of the cranes to handle bulk cargoes.	5	\$2,750,000	<input checked="" type="checkbox"/>	T2/Swan Island
23	PSU ITS Expansion	Expand PSU's existing web based ITS "count sensor" program beyond the freeway to some key arterials throughout the region and create a repository of regional freight data.	To secure truck flow and congestion data.	5		<input checked="" type="checkbox"/>	T2/Swan Island
24	Terminal 2 Yard and Rail Improvement	Reconstruct rail and pavement at Terminal 2.	Increase rail and yard operating efficiencies at Terminal 2.	5	\$16,500,000	<input checked="" type="checkbox"/>	T2/Swan Island
25	Dredge Oregon Pipe, Scows and Pontoons	Acquire 2,000 feet of dredge pipe, pontoons, anchor scows and anchors.	Allow Dredge Oregon to make full use of recent repower and pump material 14,000 feet.	5	\$10,200,000	<input checked="" type="checkbox"/>	T2/Swan Island
26	New Dredge Tender	Replace the existing vintage tugboat W.L. Williams with a newly constructed modern work-boat vessel. Repower tugboat Clackamas.	Improve operational support for Dredge Oregon dredging operations and improve environmental performance.	5	\$7,600,000	<input checked="" type="checkbox"/>	T2/Swan Island
27	T2 Crane Drives and Cabs for Cranes 2371 and 2372	Crane management system and cab upgrades for Cranes 2371 and 2372.	Improve operational efficiencies for the cargo handling cranes.	5	\$2,600,000	<input checked="" type="checkbox"/>	T2/Swan Island

Map ID	Project Name	Project Description	Purpose	Time Frame (Years)	Total Cost	Priority	Area Map
28	Dredge Oregon Support Equipment	Repower or replace navigation equipment including support vessels and landside equipment such as bulldozers.	Improve productivity and environmental performance.	5	\$2,000,000	<input checked="" type="checkbox"/>	T2/Swan Island
29	TTD Reconstruct runway 7-25	Reconstruct existing 150' x 5400' runway; narrow to 75' wide, reduce length to 4500', relocate/reconstruct edge lighting, construct required drainage improvements.	Project identified in 2004 TTD Master Plan.	5	\$18,000,000	<input checked="" type="checkbox"/>	East County
30	40 Mile Loop Trail: Blue Lake Park to Sundial Rd.	Construct a mixed use off road trail connecting Blue Lake Park and Sundial Road.	Combined with the Port's Reynolds levee trail it will complete gaps in the 40 Mile Loop Trail.	5	\$3,424,073	<input checked="" type="checkbox"/>	East County
31	Sundial Road at Graham Road	Install traffic signal.	Address traffic growth at Troutdale Reynolds Industrial Park.		\$1,000,000	<input checked="" type="checkbox"/>	East County
32	Reynolds Site Road Access Phase 3	Road improvements to serve Phase 3 industrial development. Actual project will be developed in coordination with stakeholders.	Address off-site transportation impacts.	10		<input checked="" type="checkbox"/>	East County
33	Columbia Blvd. Improvements at MLK	Construct right turn lane on Columbia at MLK.	Improve connectivity for freight traffic between Columbia Blvd. and Rivergate.	5	\$3,359,259	<input type="checkbox"/>	PDX/PIC
34	I-5/Columbia Blvd. Improvement	Construct a full interchange at Columbia Blvd. or the functional equivalent. Includes three projects: Delta Park Phase II and III and Argyle on the Hill.	Improve connections between Columbia Blvd. and I-5 for trucks.	10	\$51,773,032	<input type="checkbox"/>	PDX/PIC

Map ID	Project Name	Project Description	Purpose	Time Frame (Years)	Total Cost	Priority	Area Map
35	11th/13th (at Columbia Blvd.): Crossing Elimination	If feasible, eliminate the at-grade crossing and improve alternate roadway access.	Improve Kenton Mainline operation and eliminate a modal conflict.	5	\$1,000,000	<input type="checkbox"/>	PDX/PIC
36	Columbia Blvd. Widening (82nd Ave. - 60th Ave.)	Widen Columbia Blvd. to five lanes.	Address system bottleneck along Columbia Blvd.	20	\$15,000,000	<input type="checkbox"/>	PDX/PIC
37	PDX Transportation Demand Management (TDM)	Implement strategies at PDX and PIC properties that reduce auto trips in the airport area. Programs to be undertaken with other area businesses/developers to maximize effectiveness; possible bus shuttle through Tri Met.	Fulfill TDM requirements of PDX Master Plan. Implement TDM projects and programs recommended in the PDX Alternative Modes Study.	5		<input type="checkbox"/>	PDX/PIC
38	I-205 Auxiliary Lane NB	New auxiliary lane from I-84 to I-205 NB before Columbia Blvd.	Provide additional capacity for anticipated growth in area traffic.	5	\$6,700,000	<input type="checkbox"/>	PDX/PIC
39	SW Quad Access	Provide street access from 33rd Ave. into SW Quad.	Provide efficient movement of traffic to developing PDX properties.	10	\$5,917,500	<input type="checkbox"/>	PDX/PIC
40	PDX Roadways Signing Update	Update roadway signs to current national guidelines.	Support customer experience and safety.	5		<input type="checkbox"/>	PDX/PIC
41	33rd Avenue/Marine Drive Intersection Improvements	Signalize and modify the intersection of NE 33rd Avenue and Marine Drive.	Improve safety and access for 33rd Avenue. May incorporate bike and ped facilities as well.	5	\$5,760,643	<input type="checkbox"/>	PDX/PIC
42	Alderwood Street Bikeway	Provide bike lanes or pathway on Alderwood Road between Columbia Blvd. and the Alderwood Trail.	Improve safety and provide better separation from motor vehicle traffic.	5	\$2,500,000	<input type="checkbox"/>	PDX/PIC

Map ID	Project Name	Project Description	Purpose	Time Frame (Years)	Total Cost	Priority	Area Map
43	82nd/Airport Way Interim Improvements	Modify intersection, signals, and sidewalks between Airport Way and Frontage Road.	Interim improvements to address congestion at the intersection.	5		<input type="checkbox"/>	PDX/PIC
44	Bicycle/Pedestrian Upgrades	Modify existing paths and routes along N. Frontage Road and 82nd Avenue.	Implement recommendations from independent audit.	10		<input type="checkbox"/>	PDX/PIC
45	HIO Wash Racks	Construct new wash racks for tenant and itinerant aircraft washing with pollution control system to keep wash water out of storm system.	Improve environmental performance at the airport.	5	\$620,100	<input type="checkbox"/>	Hillsboro
46	HIO Taxiway to NW Corporate Center	Construct a taxiway to serve new tenant leasehold development.	New tenant development in the area behind the HIO ATCT will require airside infrastructure.	10	\$1,050,000	<input type="checkbox"/>	Hillsboro
47	HIO Reconstruct Runway 13R/31L	Reconstruct the runway in three phases, including lighting, drainage, and taxiway improvements.	Provide improvements identified in HIO 2006 Master Plan.	5	\$34,700,000	<input type="checkbox"/>	Hillsboro
48	HIO 13R-31L RSA Modifications	Implement modifications to reduce waterfowl habitat in the runway safety area.	Modify and mitigate for water features in the runway safety area.	5	\$4,725,000	<input type="checkbox"/>	Hillsboro
49	HIO Taxiway A Reconstruction	Rehabilitate full length parallel Taxiway A including drainage, lighting, and markings.	Provide improvements identified in HIO 2006 Master Plan	5	\$13,000,000	<input type="checkbox"/>	Hillsboro

Map ID	Project Name	Project Description	Purpose	Time Frame (Years)	Total Cost	Priority	Area Map
50	Kenton Rail Line Upgrade	Upgrade existing track to second main track with new double track from Peninsula Junction to I-205 and increase track speeds between North Portland, Peninsula Junction, to Reynolds on UP's Kenton Line.	Expand rail capacity and reduce delays for greater efficiency.	10	\$25,382,000	<input type="checkbox"/>	Rivergate
51	Cathedral Park Quiet Zone	Address rail switching noise by improving multiple public rail crossings in the St. Johns Cathedral Park area.	To allow auto import operations to continue to grow in N. Portland and improve neighborhood livability.	5	\$8,200,000	<input type="checkbox"/>	Rivergate
52	North Portland Junction	Upgrade railroad with revised crossovers, centralized traffic control tie-in and increased turning radius.	Accommodate higher rail speeds at the junction which provides greater capacity.	10	\$9,160,000	<input type="checkbox"/>	Rivergate
53	I-5 Columbia River Crossing	Increase the number of lanes and add transit capacity across the river.	Increase multi-modal capacity across the Columbia River and relieve congestion.	10	\$2,982,000,000	<input type="checkbox"/>	Rivergate
54	West Hayden Island Rail Access	Rail access from the mainline to support West Hayden Island development.	Advance rail-dependent development.	20	\$3,000,000	<input type="checkbox"/>	Rivergate
55	West Hayden Island Rail Yard	Construct rail yard connected to facility trackage.	Advance rail development on West Hayden Island.	20	\$9,500,000	<input type="checkbox"/>	Rivergate
56	West Hayden Island Interior Access Road	Construct interior roadway including rail overpass and berth access.	Provide roadway for new West Hayden Island terminal.	20	\$13,600,000	<input type="checkbox"/>	Rivergate

Map ID	Project Name	Project Description	Purpose	Time Frame (Years)	Total Cost	Priority	Area Map
57	St. Johns Pedestrian District	Improvements could include restriping, curb extensions and other pedestrian and bicycle amenities on Lombard St. that do not impede truck movement, as well as intersection improvements and signalization.	Maintain truck movement and minimize conflicts with bicycles and pedestrians between Philadelphia Ave. and Lombard St. at Pier Park.	5	\$3,346,000	<input type="checkbox"/>	Rivergate
58	Marine Dr. Improvement Phase 2	Construct rail overcrossing on Marine Dr.	Avoid road/rail conflict.	20	\$13,644,200	<input type="checkbox"/>	Rivergate
59	Willamette River Channel Deepening	Deepen the portions of the Willamette River with deep draft infrastructure to -43' where appropriate.	To allow Willamette River terminals to also benefit from the Columbia River's new controlling depth.	10	\$200,000,000	<input type="checkbox"/>	Rivergate
60	Lower Columbia River Channel Management Plan	Establish a plan to manage recurring deposition of Columbia River dredge material from the navigation channel.	Ensure there is sufficient dredged material disposal capacity for a minimum of 20 years.	10	\$1,500,000	<input type="checkbox"/>	Rivergate
61	Columbia River Anchorage Improvements	Increase number and size of anchorages up and down the Columbia River.	Allow for additional vessel capacity in the river for efficiency and safety reasons.	5		<input type="checkbox"/>	Rivergate
62	T6 Suttle Road Entrance	Construct access road from terminus of Suttle Road.	To support development of east end of T6.	20	\$3,000,000	<input type="checkbox"/>	Rivergate
63	T6 Development Project	This program includes an additional truck gate, terminal electrical upgrades, yard cranes, 6,800' arrival and 8,500' departure tracks, pavement and stormwater system renewal.	This program is needed to upgrade the terminal.	10	\$80,000,000	<input type="checkbox"/>	Rivergate

Map ID	Project Name	Project Description	Purpose	Time Frame (Years)	Total Cost	Priority	Area Map
64	T4 B416 Lay Berth Improvements	This project will design, permit and install electrical equipment upgrades necessary to allow vessels to lay berth at B416.	The project is needed to allow vessels to lay berth at Berth 416. This will help the Port retain and grow key services and to be a leader in transportation infrastructure.	5	\$1,000,000	<input type="checkbox"/>	Rivergate
65	Terminal 4 Automobile Yard Expansion	Design and construct six acres of porous pavement parking for the storage of imported automobiles.	The project will provide additional land to meet auto storage capacity needs of Toyota, supporting the Port's automobile import business line.	10	\$3,000,000	<input type="checkbox"/>	Rivergate
66	BNSF Fallbridge Double Tracking	Double-track the Fallbridge line to Washougal.	Increases capacity of the BNSF east-west mainline serving Port of Portland.	10	\$72,000,000	<input type="checkbox"/>	Rivergate
67	Berth Deepening at T2 and T4	Deepen berths at Terminals 2 and 4 to allow deeper draft vessels to transit the planned 43 foot channel. Tied to Willamette River Channel Deepening. Cost TBD.	Allow better utilization of Panamax-class bulk vessels.	10		<input type="checkbox"/>	Rivergate
68	Bonneville Rail Yard Build Out	Construct two interior yard tracks and complete the double track lead from the wye at the east end of the yard to Barnes Yard.	Add rail staging capacity for South Rivergate.	10	\$3,600,000	<input type="checkbox"/>	Rivergate
69	Ramsey Yard Utilization	Connect existing set out track with industrial lead.	Improve unit train staging capabilities at Ramsey Rail Yard.	10	\$1,700,000	<input type="checkbox"/>	Rivergate

Map ID	Project Name	Project Description	Purpose	Time Frame (Years)	Total Cost	Priority	Area Map
70	T2 Bulk Terminal	Storage, rail receiving, vessel loadout, and conveyance.	Capture small lot bulk opportunity.	5	\$30,000,000	<input type="checkbox"/>	T2/Swan Island
71	Swan Island Berth 315 Lay Berth Improvements	Design, permit berth deepening, electrical upgrades, fendering, and vehicle access for Berth 315.	The project is needed to allow vessels to lay berth at B315. This will help the Port retain and grow key services and to be a leader in transportation infrastructure.	5	\$3,500,000	<input type="checkbox"/>	T2/Swan Island
72	North Willamette Greenway Trail	Pedestrian and bicycle trail from Kelly Point Park to the Steel Bridge along the Willamette River. The money associated for this project is for a study only.	Improve pedestrian and bicycle connectivity in North Portland. Coordinate implementation with the City of Portland.	20	\$500,000	<input type="checkbox"/>	T2/Swan Island
73	Portland Terminal Railroad Power Switches	Install Dispatcher Controlled Power Switches between Lake Yard and Terminal 2.	Will reduce time it takes for trains to travel from Lake Yard to Terminal 2, reducing blockage of mainline.	5	\$10,805,000	<input type="checkbox"/>	T2/Swan Island
74	Sandy Blvd. Widening to 4 lanes	Sandy Blvd. widen to 4 lanes and center turn lane (181st-202nd) with sidewalks and bike lanes.	Improve east west capacity and serve developing industrial property.	10	\$10,000,000	<input type="checkbox"/>	East County
75	Sandy Blvd. Widening to 3 lanes	Sandy Blvd. widen to 3 lanes (207th to 238th), add sidewalks and bike lanes.	Improve east-west capacity and serve adjacent developing industrial property.	10	\$7,438,000	<input type="checkbox"/>	East County
76	NE Hogan at NE Stark Street	Add right turn lanes on all approaches and second northbound and southbound left turn lanes.	Address intersection capacity affecting access to Gresham Vista Business Park.	5	\$2,020,043	<input type="checkbox"/>	East County

Map ID	Project Name	Project Description	Purpose	Time Frame (Years)	Total Cost	Priority	Area Map
77	NE 223rd at Stark	Add eastbound and northbound right turn lanes and southbound left turn lanes.	Address intersection capacity affecting access to Gresham Vista Business Park.	5	\$3,507,190	<input type="checkbox"/>	East County
78	NE 238th Drive: Halsey to Glisan	Construct improvements for freight by modifying road curvature. Also adds improvements for bikes and pedestrians.	Will improve freight access to Gresham Vista Business Park.	5	\$9,769,340	<input type="checkbox"/>	East County
79	223rd Avenue Widening	Widen to three lanes between Halsey St and Marine Drive.	Upgrade the facility to major collector urban street standards.	5	\$3,667,000	<input type="checkbox"/>	East County

PRIORITY PROJECTS

2018 PORT TRANSPORTATION IMPROVEMENT PLAN

10 MAP ID #
PRIORITY

MARINE

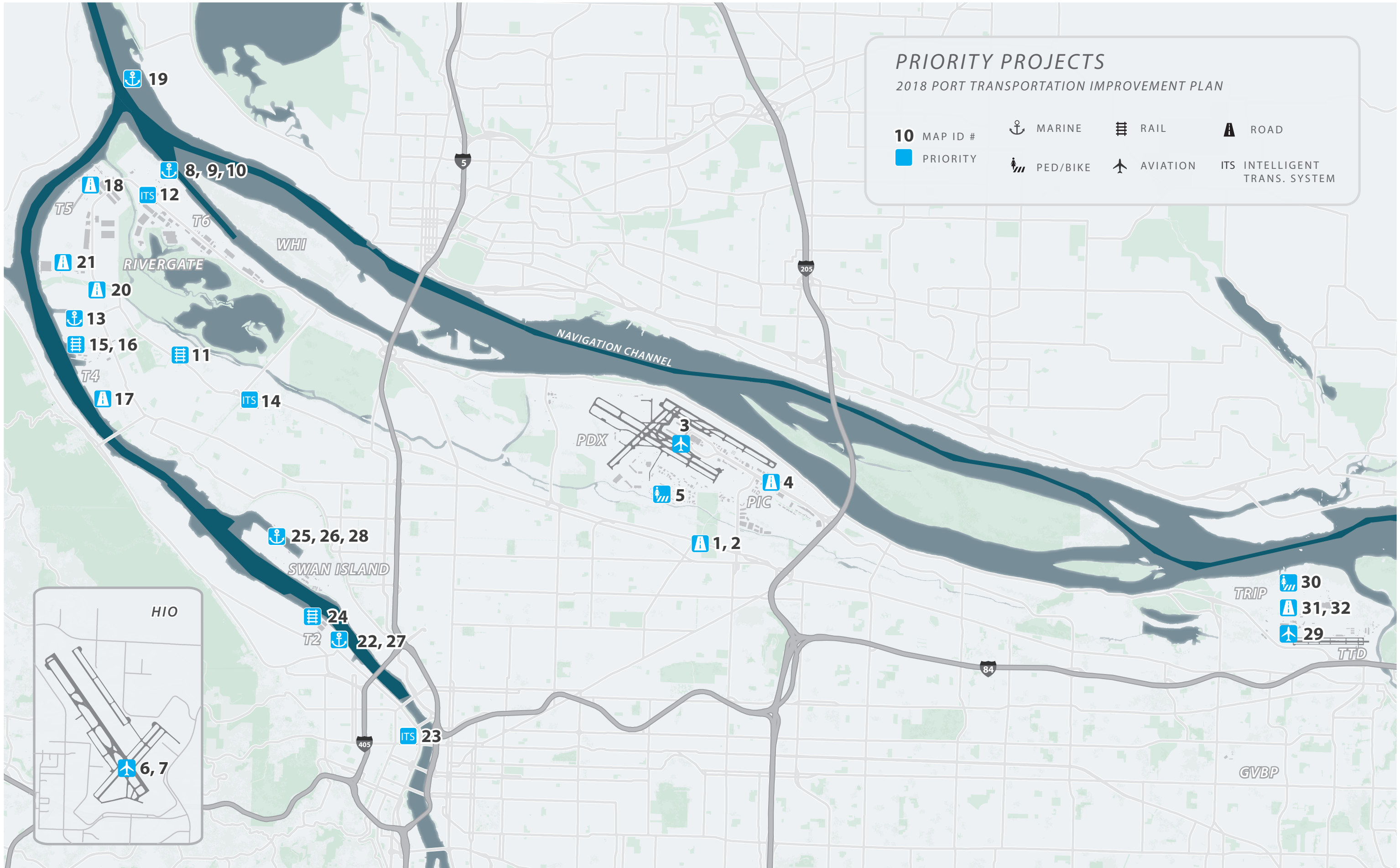
RAIL

ROAD

PED/BIKE

AVIATION

ITS INTELLIGENT TRANS. SYSTEM



Project Name: Alderwood and Columbia Blvd. Intersection

Map ID: 1	Time Frame (Years): 5 years	Total Cost: \$5,058,349
Project Type: Road		Year of Cost Estimate: 2013
Operation Area: PDX/PIC		Federal: \$4,538,856
Project Description: Widen and signalize intersection on Columbia Boulevard at Alderwood Rd.		State:
		City:
		SDC:
Purpose: Provide transportation link to the cargo area located within the south airport area and to support Columbia Corridor freight movement.		Port Share Committed: \$519,493
JDE NUM: 810020		Port Share Forecasted:
RTP Related: 10336		Private:
Recent Study: Airport Futures Transportation Impact Study (2010)		Other:
Port Strategic Area: Retain and Grow Key Services		Unfunded:
<input checked="" type="checkbox"/> RTP 2040 Illustrative	<input checked="" type="checkbox"/> Conditioned Project	Estimate Rating: 2b
<input checked="" type="checkbox"/> RTP 2040 Constrained	<input type="checkbox"/> Identified in STIP	

Project Name: Cully Blvd. and Columbia Blvd. Intersection

Map ID: 2	Time Frame (Years): 5 years	Total Cost: \$6,575,000
Project Type: Road		Year of Cost Estimate: 2013
Operation Area: PDX/PIC		Federal:
Project Description: Widen and signalize intersection on Columbia Boulevard at Cully Blvd.		State:
		City:
		SDC:
Purpose: Provide transportation link to the cargo area located within the south airport area and to support Columbia Corridor freight movement.		Port Share Committed:
JDE NUM:		Port Share Forecasted:
RTP Related: 10336		Private:
Recent Study: Airport Futures Transportation Impact Study (2010)		Other:
Port Strategic Area: Retain and Grow Key Services		Unfunded: \$6,575,000
<input checked="" type="checkbox"/> RTP 2040 Illustrative	<input type="checkbox"/> Conditioned Project	Estimate Rating: 2b
<input checked="" type="checkbox"/> RTP 2040 Constrained	<input type="checkbox"/> Identified in STIP	

Project Name: PDX NEXT

Map ID: 3 **Time Frame (Years):** 5 years
Project Type: Aviation
Operation Area: PDX/PIC
Project Description: Includes Terminal Core, Terminal Balancing, and PACR projects.

Purpose: Expand airport capacity, functionality, and resilience.

JDE NUM:
RTP Related:
Recent Study: Airport Futures

Port Strategic Area: Retain and Grow Key Services
 RTP 2040 Illustrative Conditioned Project
 RTP 2040 Constrained Identified in STIP

Total Cost: \$2,000,000,000
Year of Cost Estimate: 2017
Federal:
State:
City:
SDC:
Port Share Committed:
Port Share Forecasted:
Private:
Other:
Unfunded:
Estimate Rating: 3c

Project Name: 82nd Ave./Airport Way Grade Separation

Map ID: 4 **Time Frame (Years):** 10 years
Project Type: Road
Operation Area: PDX/PIC
Project Description: Construct grade-separated overcrossing.

Purpose: Provide efficient movement of traffic to PDX properties.

JDE NUM: 101474
RTP Related: 10362
Recent Study: Airport Futures Transportation Impact Study (2010)

Port Strategic Area: Retain and Grow Key Services
 RTP 2040 Illustrative Conditioned Project
 RTP 2040 Constrained Identified in STIP

Total Cost: \$75,000,000
Year of Cost Estimate: 2016
Federal:
State:
City:
SDC:
Port Share Committed:
Port Share Forecasted:
Private:
Other:
Unfunded: \$75,000,000
Estimate Rating: 3c

Project Name: Cornfoot Road Multimodal Safety Improvements

Map ID: 5	Time Frame (Years): 5 years	Total Cost: \$3,708,539
Project Type: Bike/Ped		Year of Cost Estimate: 2013
Operation Area: PDX/PIC		Federal:
Project Description: Provide a separated multi-use path on the north side of NE Cornfoot Road.		State:
		City:
		SDC:
Purpose: Increase safety and provide improved bicycle and pedestrian access along NE Cornfoot Road.		Port Share Committed:
		Port Share Forecasted:
JDE NUM:		Private:
RTP Related: 10340		Other:
Recent Study:		Unfunded: \$3,708,539
Port Strategic Area: Regional Leadership in Transportation		Estimate Rating:
<input checked="" type="checkbox"/> RTP 2040 Illustrative	<input type="checkbox"/> Conditioned Project	
<input checked="" type="checkbox"/> RTP 2040 Constrained	<input type="checkbox"/> Identified in STIP	

Project Name: HIO Relocate Charlie Pattern Landing Site

Map ID: 6	Time Frame (Years): 5 years	Total Cost: \$391,000
Project Type: Aviation		Year of Cost Estimate: 2014
Operation Area: Hillsboro		Federal:
Project Description: Construct a new landing site for helicopters that use the Charlie flight pattern at HIO.		State:
		City:
		SDC:
Purpose: Serve helicopter training operations, and avoid operations over noise sensitive residential zones.		Port Share Committed:
		Port Share Forecasted:
JDE NUM: 101032		Private:
RTP Related:		Other:
Recent Study:		Unfunded: \$391,000
Port Strategic Area: Retain and Grow Key Services		Estimate Rating:
<input type="checkbox"/> RTP 2040 Illustrative	<input type="checkbox"/> Conditioned Project	
<input type="checkbox"/> RTP 2040 Constrained	<input type="checkbox"/> Identified in STIP	

Project Name: HIO Relocate Taxiway AA

Map ID: 7 **Time Frame (Years):** 5 years

Project Type: Aviation

Operation Area: Hillsboro

Project Description: Relocate Taxiway AA 122 feet to the east and extend from Exit A5 to Taxiway G.

Purpose: Replace existing Taxiway AA with a new taxiway with the appropriate design separation from Taxiway A. Construct a perimeter road extension between Taxiway AA and existing tenant ramps.

JDE NUM: 101030

RTP Related:

Recent Study:

Port Strategic Area: Retain and Grow Key Services

RTP 2040 Illustrative Conditioned Project

RTP 2040 Constrained Identified in STIP

Total Cost: \$7,300,000

Year of Cost Estimate: 2016

Federal:

State:

City:

SDC:

Port Share Committed:

Port Share Forecasted:

Private:

Other:

Unfunded: \$7,300,000

Estimate Rating:

Project Name: T6 Crane Drives for Cranes 6380 and 6381

Map ID: 8 **Time Frame (Years):** 5 years

Project Type: Marine

Operation Area: Rivergate

Project Description: Crane management system upgrades for Cranes 6380 and 6381.

Purpose: Improve operational efficiencies for the container cranes.

JDE NUM:

RTP Related: 11207

Recent Study:

Port Strategic Area: Retain and Grow Key Services

RTP 2040 Illustrative Conditioned Project

RTP 2040 Constrained Identified in STIP

Total Cost: \$2,000,000

Year of Cost Estimate: 2014

Federal:

State:

City:

SDC:

Port Share Committed:

Port Share Forecasted:

Private:

Other:

Unfunded: \$2,000,000

Estimate Rating:

Project Name: T6 Auto Terminal

Map ID: 9 **Time Frame (Years):** 5 years
Project Type: Marine
Operation Area: Rivergate
Project Description: Pavement renewal, processing building, rail ramp and office.

Purpose: Capture demand for mid level auto account.

JDE NUM:
RTP Related:
Recent Study:

Port Strategic Area: Retain and Grow Key Services
 RTP 2040 Illustrative Conditioned Project
 RTP 2040 Constrained Identified in STIP

Total Cost: \$35,000,000
Year of Cost Estimate: 2017
Federal:
State:
City:
SDC:
Port Share Committed:
Port Share Forecasted:
Private:
Other:
Unfunded: \$35,000,000
Estimate Rating:

Project Name: T6 Berth 603 Low Dock

Map ID: 10 **Time Frame (Years):** 5 years
Project Type: Marine
Operation Area: Rivergate
Project Description: Modify existing berth for roll on-roll off (RORO) vessels.

Purpose: Capture demand for high and heavy cargo.

JDE NUM:
RTP Related:
Recent Study:

Port Strategic Area: Retain and Grow Key Services
 RTP 2040 Illustrative Conditioned Project
 RTP 2040 Constrained Identified in STIP

Total Cost: \$8,000,000
Year of Cost Estimate: 2017
Federal:
State:
City:
SDC:
Port Share Committed:
Port Share Forecasted:
Private:
Other:
Unfunded: \$8,000,000
Estimate Rating:

Project Name: Barnes to Terminal 4 Rail

Map ID: 11 **Time Frame (Years):** 5 years
Project Type: Rail
Operation Area: Rivergate
Project Description: Provide a new track from Barnes Yard to Terminal 4. Includes replacement of Lombard Bridge.
Purpose: Improve rail access to Terminal 4.

JDE NUM:
RTP Related: 11355
Recent Study: Marine Terminal Master Plan 2020 (2003)

Port Strategic Area: Regional Leadership in Industrial Lands

- RTP 2040 Illustrative Conditioned Project
- RTP 2040 Constrained Identified in STIP

Total Cost: \$10,543,000
Year of Cost Estimate: 2016
Federal:
State:
City:
SDC:
Port Share Committed:
Port Share Forecasted:
Private:
Other:
Unfunded: \$10,543,000
Estimate Rating: 3c

Project Name: Rivergate ITS

Map ID: 12 **Time Frame (Years):** 5 years
Project Type: ITS
Operation Area: Rivergate
Project Description: Intelligent Transportation System in Rivergate.
Purpose: Improve traffic efficiency in Rivergate by connecting information about the roadway system to ODOT's Highway information systems.

JDE NUM:
RTP Related: 10373
Recent Study:

Port Strategic Area: Regional Leadership in Transportation

- RTP 2040 Illustrative Conditioned Project
- RTP 2040 Constrained Identified in STIP

Total Cost: \$480,000
Year of Cost Estimate: 2007
Federal:
State:
City:
SDC:
Port Share Committed:
Port Share Forecasted:
Private:
Other:
Unfunded: \$480,000
Estimate Rating: 3c

Project Name: Terminal 4 Pier 1 Site Preparation

Map ID: 13 **Time Frame (Years):** 5 years

Project Type: Marine

Operation Area: Rivergate

Project Description: Remove Berths 405 and 408, the grain leg platform and tower, and the grain elevator in the Pier 1 area of Terminal 4.

Purpose: This project will facilitate the redevelopment of approximately 30 acres of vital marine industrial property in the Portland Harbor.

JDE NUM: 810048, 810049

RTP Related: 11208

Recent Study: Terminal 4 Pier 1 Facility Plan (TEC Inc.)

Port Strategic Area: Regional Leadership in Industrial Lands

RTP 2040 Illustrative Conditioned Project

RTP 2040 Constrained Identified in STIP

Total Cost: \$38,000,000

Year of Cost Estimate: 2015

Federal:

State:

City:

SDC:

Port Share Committed:

Port Share Forecasted:

Private:

Other:

Unfunded: \$38,000,000

Estimate Rating:

Project Name: Marine Drive ITS Improvement

Map ID: 14 **Time Frame (Years):** 10 years

Project Type: ITS

Operation Area: Rivergate

Project Description: Install a CCTV at Portland Road and changeable message signs at N. Portland Road, North Vancouver Way and NE 185th Drive.

Purpose: Improve traffic efficiency in the Columbia Corridor.

JDE NUM:

RTP Related: 10346

Recent Study: Columbia Multimodal Corridor Study 2012

Port Strategic Area: Regional Leadership in Transportation

RTP 2040 Illustrative Conditioned Project

RTP 2040 Constrained Identified in STIP

Total Cost: \$200,000

Year of Cost Estimate: 2007

Federal:

State:

City:

SDC:

Port Share Committed:

Port Share Forecasted:

Private:

Other:

Unfunded: \$200,000

Estimate Rating:

Project Name: T4 Pier 1 Tracks 704-709

Map ID: 15 **Time Frame (Years):** 5 years
Project Type: Marine
Operation Area: Rivergate
Project Description: Perform upgrades and rehabilitation on tracks 704-709.

Purpose: Support rail car storage needs of Terminal 4 tenants

JDE NUM:
RTP Related: 11208
Recent Study: Port Rail Plan

Port Strategic Area: Retain and Grow Key Services
 RTP 2040 Illustrative Conditioned Project
 RTP 2040 Constrained Identified in STIP

Total Cost: \$450,000
Year of Cost Estimate: 2013
Federal:
State:
City:
SDC:
Port Share Committed:
Port Share Forecasted:
Private:
Other:
Unfunded: \$450,000
Estimate Rating:

Project Name: T4 Berth 410, 411 Rail Yard Improvements

Map ID: 16 **Time Frame (Years):** 10 years
Project Type: Rail
Operation Area: Rivergate
Project Description: Construct additional rail track in the Berth 410 and 411 Rail Yard.

Purpose: Improve the efficiency of the rail yard by creating additional rail capacity.

JDE NUM: 100658
RTP Related:
Recent Study: Port Rail Plan

Port Strategic Area: Retain and Grow Key Services
 RTP 2040 Illustrative Conditioned Project
 RTP 2040 Constrained Identified in STIP

Total Cost: \$7,800,000
Year of Cost Estimate: 2015
Federal:
State:
City:
SDC:
Port Share Committed:
Port Share Forecasted:
Private:
Other:
Unfunded: \$7,800,000
Estimate Rating: 3c

Project Name: T4 Second Entrance

Map ID: 17 **Time Frame (Years):** 5 years
Project Type: Road
Operation Area: Rivergate
Project Description: Design and construct a second entrance to Terminal 4.

Purpose: Support additional rail expansion at the terminal.

JDE NUM: 100470
RTP Related:
Recent Study: Terminal 4 Pier 1 Facility Plan

Port Strategic Area: Retain and Grow Key Services
 RTP 2040 Illustrative Conditioned Project
 RTP 2040 Constrained Identified in STIP

Total Cost: \$12,000,000
Year of Cost Estimate: 2016
Federal:
State:
City:
SDC:
Port Share Committed:
Port Share Forecasted:
Private:
Other:
Unfunded: \$12,000,000
Estimate Rating:

Project Name: Terminal 5 Entrance Road

Map ID: 18 **Time Frame (Years):** 5 years
Project Type: Road
Operation Area: Rivergate
Project Description: Provide secondary access road and rehabilitate existing pavement.

Purpose: The project will address anticipated traffic needs.

JDE NUM: 102474
RTP Related:
Recent Study:

Port Strategic Area: Retain and Grow Key Services
 RTP 2040 Illustrative Conditioned Project
 RTP 2040 Constrained Identified in STIP

Total Cost: \$1,058,122
Year of Cost Estimate: 2016
Federal:
State:
City:
SDC:
Port Share Committed:
Port Share Forecasted:
Private:
Other:
Unfunded: \$1,058,122
Estimate Rating: 3c

Project Name: Columbia River Mouth Jetty Refurbishment

Map ID: 19	Time Frame (Years): 5 years	Total Cost: \$239,000,000
Project Type: Marine		Year of Cost Estimate: 2016
Operation Area: Rivergate		Federal: \$22,000,000
Project Description: With Jetty A now complete, refurbish and repair the north and south jetties at the mouth of the Columbia River.		State:
		City:
Purpose: This is a critical repair of the jetties at the Columbia River Bar.		SDC:
		Port Share Committed:
JDE NUM:		Port Share Forecasted:
RTP Related:		Private:
Recent Study:		Other:
Port Strategic Area: Regional Leadership in Transportation		Unfunded: \$217,000,000
<input type="checkbox"/> RTP 2040 Illustrative	<input type="checkbox"/> Conditioned Project	Estimate Rating:
<input type="checkbox"/> RTP 2040 Constrained	<input type="checkbox"/> Identified in STIP	

Project Name: Time Oil Road Reconstruction

Map ID: 20	Time Frame (Years): 10 years	Total Cost: \$9,000,000
Project Type: Road		Year of Cost Estimate: 2013
Operation Area: Rivergate		Federal:
Project Description: Reconstruct Time Oil Road.		State:
		City:
Purpose: Provide improved access to South Rivergate industrial area.		SDC:
		Port Share Committed:
JDE NUM:		Port Share Forecasted:
RTP Related: 11654		Private:
Recent Study:		Other:
Port Strategic Area: Regional Leadership in Transportation		Unfunded: \$9,000,000
<input checked="" type="checkbox"/> RTP 2040 Illustrative	<input type="checkbox"/> Conditioned Project	Estimate Rating:
<input checked="" type="checkbox"/> RTP 2040 Constrained	<input type="checkbox"/> Identified in STIP	

Project Name: Rivergate Boulevard Overcrossing

Map ID: 21 **Time Frame (Years):** 5 years
Project Type: Road
Operation Area: Rivergate
Project Description: Grade separate the South Rivergate Lead at Rivergate Blvd.

Purpose: Improve rail and vehicle traffic flow in Rivergate Industrial District.

JDE NUM: 810067
RTP Related: 11659
Recent Study:

Port Strategic Area: Regional Leadership in Transportation

- RTP 2040 Illustrative Conditioned Project
- RTP 2040 Constrained Identified in STIP

Total Cost: \$19,549,000
Year of Cost Estimate: 2015
Federal: \$10,549,000
State:
City: \$5,000,000
SDC:
Port Share Committed:
Port Share Forecasted: \$4,000,000
Private:
Other:
Unfunded:
Estimate Rating: 2b

Project Name: Terminal 2 Crane Upgrades

Map ID: 22 **Time Frame (Years):** 5 years
Project Type: Marine
Operation Area: T2/Swan Island
Project Description: The project will modify and upgrade Cranes 2371 and 2372, located at Terminal 2. The improvements will increase the suitability and efficiency of the crane to handle bulk cargoes.

Purpose: The improvements will increase the suitability and efficiency of the cranes to handle bulk cargoes.

JDE NUM: 102265, 102315
RTP Related: 11649
Recent Study:

Port Strategic Area: Retain and Grow Key Services

- RTP 2040 Illustrative Conditioned Project
- RTP 2040 Constrained Identified in STIP

Total Cost: \$2,750,000
Year of Cost Estimate: 2015
Federal:
State:
City:
SDC:
Port Share Committed:
Port Share Forecasted:
Private:
Other:
Unfunded: \$2,750,000
Estimate Rating: 2b

Project Name: PSU ITS Expansion

Map ID: 23 **Time Frame (Years):** 5 years
Project Type: ITS
Operation Area: T2/Swan Island
Project Description: Expand PSU's existing web based ITS "count sensor" program beyond the freeway to some key arterials throughout the region and create a repository of regional freight data.
Purpose: To secure truck flow and congestion data.

JDE NUM:
RTP Related: 10377
Recent Study:

Port Strategic Area: Regional Leadership in Transportation

- RTP 2040 Illustrative Conditioned Project
- RTP 2040 Constrained Identified in STIP

Total Cost:
Year of Cost Estimate:
Federal:
State:
City:
SDC:
Port Share Committed:
Port Share Forecasted:
Private:
Other:
Unfunded:
Estimate Rating:

Project Name: Terminal 2 Yard and Rail Improvement

Map ID: 24 **Time Frame (Years):** 5 years
Project Type: Rail
Operation Area: T2/Swan Island
Project Description: Reconstruct rail and pavement at Terminal 2.
Purpose: Increase rail and yard operating efficiencies at Terminal 2.

JDE NUM:
RTP Related: 11649
Recent Study:

Port Strategic Area: Retain and Grow Key Services

- RTP 2040 Illustrative Conditioned Project
- RTP 2040 Constrained Identified in STIP

Total Cost: \$16,500,000
Year of Cost Estimate: 2016
Federal:
State:
City:
SDC:
Port Share Committed:
Port Share Forecasted:
Private:
Other:
Unfunded: \$16,500,000
Estimate Rating: 3c

Project Name: Dredge Oregon Pipe, Scows and Pontoons

Map ID: 25 **Time Frame (Years):** 5 years
Project Type: Marine
Operation Area: T2/Swan Island
Project Description: Acquire 2,000 feet of dredge pipe, pontoons, anchor scows and anchors.

Purpose: Allow Dredge Oregon to make full use of recent repower and pump material 14,000 feet.

JDE NUM: 102271
RTP Related:
Recent Study:

Port Strategic Area: Regional Leadership in Transportation

- RTP 2040 Illustrative Conditioned Project
- RTP 2040 Constrained Identified in STIP

Total Cost: \$10,200,000
Year of Cost Estimate: 2014
Federal:
State:
City:
SDC:
Port Share Committed:
Port Share Forecasted:
Private:
Other:
Unfunded: \$10,200,000
Estimate Rating: 3c

Project Name: New Dredge Tender

Map ID: 26 **Time Frame (Years):** 5 years
Project Type: Marine
Operation Area: T2/Swan Island
Project Description: Replace the existing vintage tugboat W.L. Williams with a newly constructed modern work-boat vessel. Repower tugboat Clackamas.

Purpose: Improve operational support for Dredge Oregon dredging operations and improve environmental performance.

JDE NUM: 101349, 102077
RTP Related:
Recent Study:

Port Strategic Area: Regional Leadership in Transportation

- RTP 2040 Illustrative Conditioned Project
- RTP 2040 Constrained Identified in STIP

Total Cost: \$7,600,000
Year of Cost Estimate: 2014
Federal:
State:
City:
SDC:
Port Share Committed:
Port Share Forecasted:
Private:
Other:
Unfunded: \$7,600,000
Estimate Rating: 3c

Project Name: T2 Crane Drives and Cabs for Cranes 2371 and 2372

Map ID: 27 **Time Frame (Years):** 5 years

Project Type: Marine

Operation Area: T2/Swan Island

Project Description: Crane management system and cab upgrades for Cranes 2371 and 2372.

Purpose: Improve operational efficiencies for the cargo handling cranes.

JDE NUM: 101496

RTP Related:

Recent Study:

Port Strategic Area: Retain and Grow Key Services

RTP 2040 Illustrative Conditioned Project

RTP 2040 Constrained Identified in STIP

Total Cost: \$2,600,000

Year of Cost Estimate: 2015

Federal:

State:

City:

SDC:

Port Share Committed:

Port Share Forecasted:

Private:

Other:

Unfunded: \$2,600,000

Estimate Rating:

Project Name: Dredge Oregon Support Equipment

Map ID: 28 **Time Frame (Years):** 5 years

Project Type: Marine

Operation Area: T2/Swan Island

Project Description: Repower or replace navigation equipment including support vessels and landside equipment such as bulldozers.

Purpose: Improve productivity and environmental performance.

JDE NUM:

RTP Related:

Recent Study:

Port Strategic Area: Portwide Environmental Strategy

RTP 2040 Illustrative Conditioned Project

RTP 2040 Constrained Identified in STIP

Total Cost: \$2,000,000

Year of Cost Estimate: 2015

Federal:

State:

City:

SDC:

Port Share Committed:

Port Share Forecasted:

Private:

Other:

Unfunded: \$2,000,000

Estimate Rating:

Project Name: TTD Reconstruct runway 7-25

Map ID: 29 **Time Frame (Years):** 5 years

Project Type: Aviation

Operation Area: East County

Project Description: Reconstruct existing 150' x 5400' runway; narrow to 75' wide, reduce length to 4500', relocate/reconstruct edge lighting, construct required drainage improvements.

Purpose: Project identified in 2004 TTD Master Plan.

JDE NUM: 101039

RTP Related:

Recent Study:

Port Strategic Area: Retain and Grow Key Services

RTP 2040 Illustrative Conditioned Project

RTP 2040 Constrained Identified in STIP

Total Cost: \$18,000,000

Year of Cost Estimate: 2010

Federal:

State:

City:

SDC:

Port Share Committed:

Port Share Forecasted:

Private:

Other:

Unfunded: \$18,000,000

Estimate Rating:

Project Name: 40 Mile Loop Trail: Blue Lake Park to Sundial Rd.

Map ID: 30 **Time Frame (Years):** 5 years

Project Type: Bike/Ped

Operation Area: East County

Project Description: Construct a mixed use off road trail connecting Blue Lake Park and Sundial Road.

Purpose: Combined with the Port's Reynolds levee trail it will complete gaps in the 40 Mile Loop Trail.

JDE NUM: 102069

RTP Related: 10408

Recent Study:

Port Strategic Area: Regional Leadership in Transportation

RTP 2040 Illustrative Conditioned Project

RTP 2040 Constrained Identified in STIP

Total Cost: \$3,424,073

Year of Cost Estimate: 2014

Federal: \$3,072,421

State:

City: \$117,217

SDC:

Port Share Committed: \$234,435

Port Share Forecasted:

Private:

Other:

Unfunded:

Estimate Rating:

Project Name: Sundial Road at Graham Road

Map ID: 31 **Time Frame (Years):** years
Project Type: Road
Operation Area: East County
Project Description: Install traffic signal.

Purpose: Address traffic growth at Troutdale Reynolds Industrial Park.

JDE NUM:
RTP Related:
Recent Study: Troutdale Reynolds Traffic Study

Port Strategic Area: Regional Leadership in Industrial Lands

- RTP 2040 Illustrative Conditioned Project
- RTP 2040 Constrained Identified in STIP

Total Cost: \$1,000,000
Year of Cost Estimate: 2017
Federal:
State:
City:
SDC:
Port Share Committed:
Port Share Forecasted:
Private:
Other:
Unfunded: \$1,000,000
Estimate Rating: 3c

Project Name: Reynolds Site Road Access Phase 3

Map ID: 32 **Time Frame (Years):** 10 years
Project Type: Road
Operation Area: East County
Project Description: Road improvements to serve Phase 3 industrial development. Actual project will be developed in coordination with stakeholders.

Purpose: Address off-site transportation impacts.

JDE NUM:
RTP Related: 11231, 11232
Recent Study:








Port Strategic Area: Regional Leadership in Industrial Lands

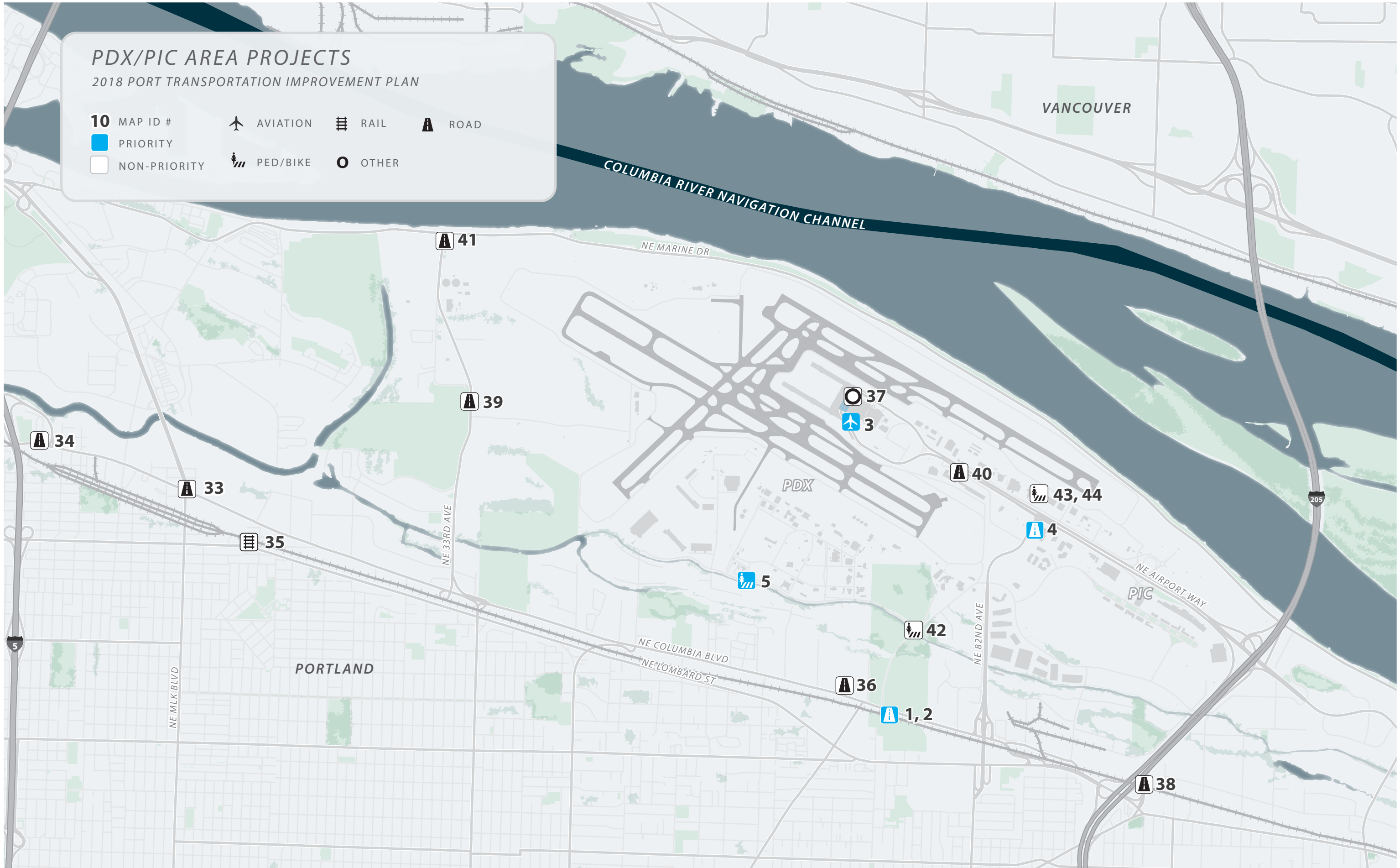
- RTP 2040 Illustrative Conditioned Project
- RTP 2040 Constrained Identified in STIP

Total Cost:
Year of Cost Estimate:
Federal:
State:
City:
SDC:
Port Share Committed:
Port Share Forecasted:
Private:
Other:
Unfunded:
Estimate Rating:

PDX/PIC AREA PROJECTS

2018 PORT TRANSPORTATION IMPROVEMENT PLAN

- 10** MAP ID #
-  AVIATION
-  RAIL
-  ROAD
-  PRIORITY
-  PED/BIKE
-  OTHER
-  NON-PRIORITY



Project Name: Columbia Blvd. Improvements at MLK

Map ID: 33	Time Frame (Years): 5 years	Total Cost: \$3,359,259
Project Type: Road		Year of Cost Estimate: 2011
Operation Area: PDX/PIC		Federal: \$3,014,263
Project Description: Construct right turn lane on Columbia at MLK.		State:
		City: \$344,996
		SDC:
Purpose: Improve connectivity for freight traffic between Columbia Blvd. and Rivergate.		Port Share Committed:
		Port Share Forecasted:
JDE NUM:		Private:
RTP Related: 10208		Other:
Recent Study: Columbia Corridor Transportation Study (1999)		Unfunded:
Port Strategic Area: Regional Leadership in Transportation		Estimate Rating:
<input checked="" type="checkbox"/> RTP 2040 Illustrative	<input type="checkbox"/> Conditioned Project	
<input checked="" type="checkbox"/> RTP 2040 Constrained	<input checked="" type="checkbox"/> Identified in STIP	

Project Name: I-5/Columbia Blvd. Improvement

Map ID: 34	Time Frame (Years): 10 years	Total Cost: \$51,773,032
Project Type: Road		Year of Cost Estimate: 2006
Operation Area: PDX/PIC		Federal:
Project Description: Construct a full interchange at Columbia Blvd. or the functional equivalent. Includes three projects: Delta Park Phase II and III and Argyle on the Hill.		State:
		City:
Purpose: Improve connections between Columbia Blvd. and I-5 for trucks.		SDC:
		Port Share Committed:
JDE NUM:		Port Share Forecasted:
RTP Related: 10219, 10874, 11		Private:
Recent Study: I-5 Delta Park Environmental Assessment (2006)		Other:
Port Strategic Area: Regional Leadership in Transportation		Unfunded: \$51,773,032
<input checked="" type="checkbox"/> RTP 2040 Illustrative	<input type="checkbox"/> Conditioned Project	Estimate Rating:
<input checked="" type="checkbox"/> RTP 2040 Constrained	<input checked="" type="checkbox"/> Identified in STIP	

Project Name: 11th/13th (at Columbia Blvd.): Crossing Elimination

Map ID: 35	Time Frame (Years): 5 years	Total Cost: \$1,000,000
Project Type: Rail		Year of Cost Estimate: 2007
Operation Area: PDX/PIC		Federal:
Project Description: If feasible, eliminate the at-grade crossing and improve alternate roadway access.		State:
		City:
Purpose: Improve Kenton Mainline operation and eliminate a modal conflict.		SDC:
JDE NUM:		Port Share Committed:
RTP Related: 10334		Port Share Forecasted:
Recent Study:		Private:
Port Strategic Area: Regional Leadership in Transportation		Other:
<input checked="" type="checkbox"/> RTP 2040 Illustrative	<input type="checkbox"/> Conditioned Project	Unfunded: \$1,000,000
<input checked="" type="checkbox"/> RTP 2040 Constrained	<input type="checkbox"/> Identified in STIP	Estimate Rating:

Project Name: Columbia Blvd. Widening (82nd Ave. - 60th Ave.)

Map ID: 36	Time Frame (Years): 20 years	Total Cost: \$15,000,000
Project Type: Road		Year of Cost Estimate: 2003
Operation Area: PDX/PIC		Federal:
Project Description: Widen Columbia Blvd. to five lanes.		State:
		City:
Purpose: Address system bottleneck along Columbia Blvd.		SDC:
JDE NUM:		Port Share Committed:
RTP Related: 10376		Port Share Forecasted:
Recent Study: East Columbia-Lombard Connector Study Transportation Analysis (2000)		Private:
Port Strategic Area: Regional Leadership in Transportation		Other:
<input checked="" type="checkbox"/> RTP 2040 Illustrative	<input type="checkbox"/> Conditioned Project	Unfunded: \$15,000,000
<input checked="" type="checkbox"/> RTP 2040 Constrained	<input type="checkbox"/> Identified in STIP	Estimate Rating:

Project Name: PDX Transportation Demand Management (TDM)

Map ID: 37 **Time Frame (Years):** 5 years

Project Type: Other

Operation Area: PDX/PIC

Project Description: Implement strategies at PDX and PIC properties that reduce auto trips in the airport area. Programs to be undertaken with other area businesses/developers to maximize effectiveness; possible bus shuttle through Tri Met.

Purpose: Fulfill TDM requirements of PDX Master Plan. Implement TDM projects and programs recommended in the PDX Alternative Modes Study.

JDE NUM:

RTP Related: 10380

Recent Study: PDX Employee TDM Program Study (2002)

Port Strategic Area: Regional Leadership in Transportation

RTP 2040 Illustrative Conditioned Project

RTP 2040 Constrained Identified in STIP

Total Cost:

Year of Cost Estimate:

Federal:

State:

City:

SDC:

Port Share Committed:

Port Share Forecasted:

Private:

Other:

Unfunded:

Estimate Rating:

Project Name: I-205 Auxiliary Lane NB

Map ID: 38 **Time Frame (Years):** 5 years

Project Type: Road

Operation Area: PDX/PIC

Project Description: New auxiliary lane from I-84 to I-205 NB before Columbia Blvd.

Purpose: Provide additional capacity for anticipated growth in area traffic.

JDE NUM:

RTP Related: 11398

Recent Study: ODOT Bottleneck Study (2013)

Port Strategic Area: Regional Leadership in Transportation

RTP 2040 Illustrative Conditioned Project

RTP 2040 Constrained Identified in STIP

Total Cost: \$6,700,000

Year of Cost Estimate: 2013

Federal: \$6,700,000

State:

City:

SDC:

Port Share Committed:

Port Share Forecasted:

Private:

Other:

Unfunded:

Estimate Rating:

Project Name: SW Quad Access

Map ID: 39 **Time Frame (Years):** 10 years
Project Type: Road
Operation Area: PDX/PIC
Project Description: Provide street access from 33rd Ave. into SW Quad.

Purpose: Provide efficient movement of traffic to developing PDX properties.

JDE NUM:
RTP Related: 10363
Recent Study: PDX Conditional Use Master Plan (2003)

Port Strategic Area: Regional Leadership in Industrial Land
 RTP 2040 Illustrative Conditioned Project
 RTP 2040 Constrained Identified in STIP

Total Cost: \$5,917,500
Year of Cost Estimate: 2007
Federal:
State:
City:
SDC:
Port Share Committed:
Port Share Forecasted:
Private:
Other:
Unfunded: \$5,917,500
Estimate Rating: 3c

Project Name: PDX Roadways Signing Update

Map ID: 40 **Time Frame (Years):** 5 years
Project Type: Road
Operation Area: PDX/PIC
Project Description: Update roadway signs to current national guidelines.

Purpose: Support customer experience and safety.

JDE NUM:
RTP Related:
Recent Study:

Port Strategic Area: Retain and Grow Ket Services
 RTP 2040 Illustrative Conditioned Project
 RTP 2040 Constrained Identified in STIP

Total Cost:
Year of Cost Estimate:
Federal:
State:
City:
SDC:
Port Share Committed:
Port Share Forecasted:
Private:
Other:
Unfunded:
Estimate Rating:

Project Name: 33rd Avenue/Marine Drive Intersection Improvements

Map ID: 41	Time Frame (Years): 5 years	Total Cost: \$5,760,643
Project Type: Road		Year of Cost Estimate: 2013
Operation Area: PDX/PIC		Federal:
Project Description: Signalize and modify the intersection of NE 33rd Avenue and Marine Drive.		State:
		City: \$1,000,000
		SDC:
Purpose: Improve safety and access for 33rd Avenue. May incorporate bike and ped facilities as well.		Port Share Committed:
		Port Share Forecasted:
JDE NUM:		Private:
RTP Related: 10337		Other:
Recent Study: PDX Airport Futures 2010 Master Plan		Unfunded: \$4,760,643
Port Strategic Area: Regional Leadership in Transportation		Estimate Rating:
<input checked="" type="checkbox"/> RTP 2040 Illustrative	<input type="checkbox"/> Conditioned Project	
<input checked="" type="checkbox"/> RTP 2040 Constrained	<input type="checkbox"/> Identified in STIP	

Project Name: Alderwood Street Bikeway

Map ID: 42	Time Frame (Years): 5 years	Total Cost: \$2,500,000
Project Type: Bike/Ped		Year of Cost Estimate: 2017
Operation Area: PDX/PIC		Federal:
Project Description: Provide bike lanes or pathway on Alderwood Road between Columbia Blvd. and the Alderwood Trail.		State:
		City:
		SDC:
Purpose: Improve safety and provide better separation from motor vehicle traffic.		Port Share Committed:
		Port Share Forecasted:
JDE NUM:		Private:
RTP Related: 10338		Other:
Recent Study: 2014 Airport Bike and Pedestrian Master Plan		Unfunded: \$2,500,000
Port Strategic Area: Regional Leadership in Transportation		Estimate Rating:
<input checked="" type="checkbox"/> RTP 2040 Illustrative	<input type="checkbox"/> Conditioned Project	
<input checked="" type="checkbox"/> RTP 2040 Constrained	<input type="checkbox"/> Identified in STIP	

Project Name: 82nd/Airport Way Interim Improvements

Map ID: 43 **Time Frame (Years):** 5 years

Project Type: Bike/Ped

Operation Area: PDX/PIC

Project Description: Modify intersection, signals, and sidewalks between Airport Way and Frontage Road.

Purpose: Interim improvements to address congestion at the intersection.

JDE NUM:

RTP Related:

Recent Study:

Port Strategic Area: Regional Leadership in Transportation

- RTP 2040 Illustrative Conditioned Project
- RTP 2040 Constrained Identified in STIP

- Total Cost:**
- Year of Cost Estimate:**
- Federal:**
- State:**
- City:**
- SDC:**
- Port Share Committed:**
- Port Share Forecasted:**
- Private:**
- Other:**
- Unfunded:**
- Estimate Rating:**

Project Name: Bicycle/Pedestrian Upgrades

Map ID: 44 **Time Frame (Years):** 10 years

Project Type: Bike/Ped

Operation Area: PDX/PIC

Project Description: Modify existing paths and routes along N. Frontage Road and 82nd Avenue.

Purpose: Implement recommendations from independent audit.

JDE NUM:

RTP Related:

Recent Study:

Port Strategic Area: Regional Leadership in Transportation

- RTP 2040 Illustrative Conditioned Project
- RTP 2040 Constrained Identified in STIP

- Total Cost:**
- Year of Cost Estimate:**
- Federal:**
- State:**
- City:**
- SDC:**
- Port Share Committed:**
- Port Share Forecasted:**
- Private:**
- Other:**
- Unfunded:**
- Estimate Rating:**

HIO AREA PROJECTS

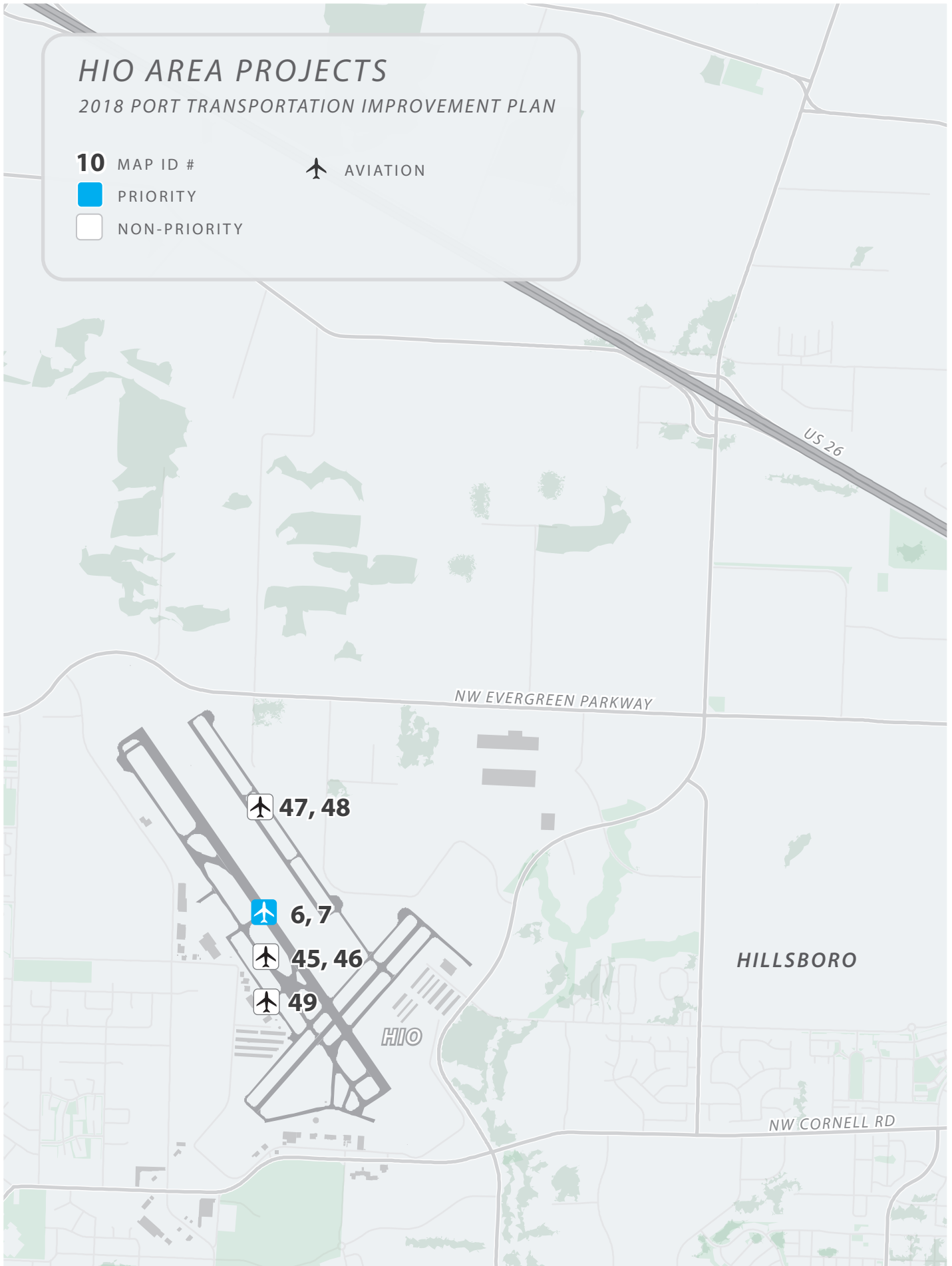
2018 PORT TRANSPORTATION IMPROVEMENT PLAN

10 MAP ID #

 AVIATION

 PRIORITY

 NON-PRIORITY



Project Name: HIO Wash Racks

Map ID: 45 **Time Frame (Years):** 5 years

Project Type: Aviation

Operation Area: Hillsboro

Project Description: Construct new wash racks for tenant and itinerant aircraft washing with pollution control system to keep wash water out of storm system.

Purpose: Improve environmental performance at the airport.

JDE NUM: 100646

RTP Related:

Recent Study:

Port Strategic Area: Portwide Environmental Strategy

RTP 2040 Illustrative Conditioned Project

RTP 2040 Constrained Identified in STIP

Total Cost: \$620,100

Year of Cost Estimate: 2010

Federal:

State:

City:

SDC:

Port Share Committed:

Port Share Forecasted:

Private:

Other:

Unfunded: \$620,100

Estimate Rating:

Project Name: HIO Taxiway to NW Corporate Center

Map ID: 46 **Time Frame (Years):** 10 years

Project Type: Aviation

Operation Area: Hillsboro

Project Description: Construct a taxiway to serve new tenant leasehold development.

Purpose: New tenant development in the area behind the HIO ATCT will require airside infrastructure.

JDE NUM: 100657

RTP Related:

Recent Study:

Port Strategic Area: Retain and Grow Key Services

RTP 2040 Illustrative Conditioned Project

RTP 2040 Constrained Identified in STIP

Total Cost: \$1,050,000

Year of Cost Estimate: 2009

Federal:

State:

City:

SDC:

Port Share Committed:

Port Share Forecasted:

Private:

Other:

Unfunded: \$1,050,000

Estimate Rating:

Project Name: HIO Reconstruct Runway 13R/31L

Map ID: 47 **Time Frame (Years):** 5 years

Project Type: Aviation

Operation Area: Hillsboro

Project Description: Reconstruct the runway in three phases, including lighting, drainage, and taxiway improvements.

Purpose: Provide improvements identified in HIO 2006 Master Plan.

JDE NUM: 101544

RTP Related:

Recent Study: HIO 2006 Master Plan

Port Strategic Area: Retain and Grow Key Services

- RTP 2040 Illustrative Conditioned Project
- RTP 2040 Constrained Identified in STIP

Total Cost: \$34,700,000

Year of Cost Estimate: 2016

Federal:

State:

City:

SDC:

Port Share Committed:

Port Share Forecasted:

Private:

Other:

Unfunded: \$343,700,000

Estimate Rating:

Project Name: HIO 13R-31L RSA Modifications

Map ID: 48 **Time Frame (Years):** 5 years

Project Type: Aviation

Operation Area: Hillsboro

Project Description: Implement modifications to reduce waterfowl habitat in the runway safety area.

Purpose: Modify and mitigate for water features in the runway safety area.

JDE NUM: 101037

RTP Related:

Recent Study:

Port Strategic Area: Retain and Grow Key Services

- RTP 2040 Illustrative Conditioned Project
- RTP 2040 Constrained Identified in STIP

Total Cost: \$4,725,000

Year of Cost Estimate: 2016

Federal:

State:

City:

SDC:

Port Share Committed:

Port Share Forecasted:

Private:

Other:

Unfunded: \$4,725,000

Estimate Rating: 3c

Project Name: HIO Taxiway A Reconstruction

Map ID: 49

Time Frame (Years): 5 years

Total Cost: \$13,000,000

Project Type: Aviation

Year of Cost

Estimate: 2016

Operation Area: Hillsboro

Federal:

Project Description: Rehabilitate full length parallel Taxiway A including drainage, lighting, and markings.

State:

City:

Purpose: Provide improvements identified in HIO 2006 Master Plan

SDC:

Port Share

Committed:

JDE NUM: 102386

Port Share

Forecasted:

RTP Related:

Private:

Recent Study: HIO 2006 Master Plan

Other:

Port Strategic Area: Retain and Grow Key Services

Unfunded: \$13,000,000

RTP 2040 Illustrative

Conditioned Project

Estimate Rating:

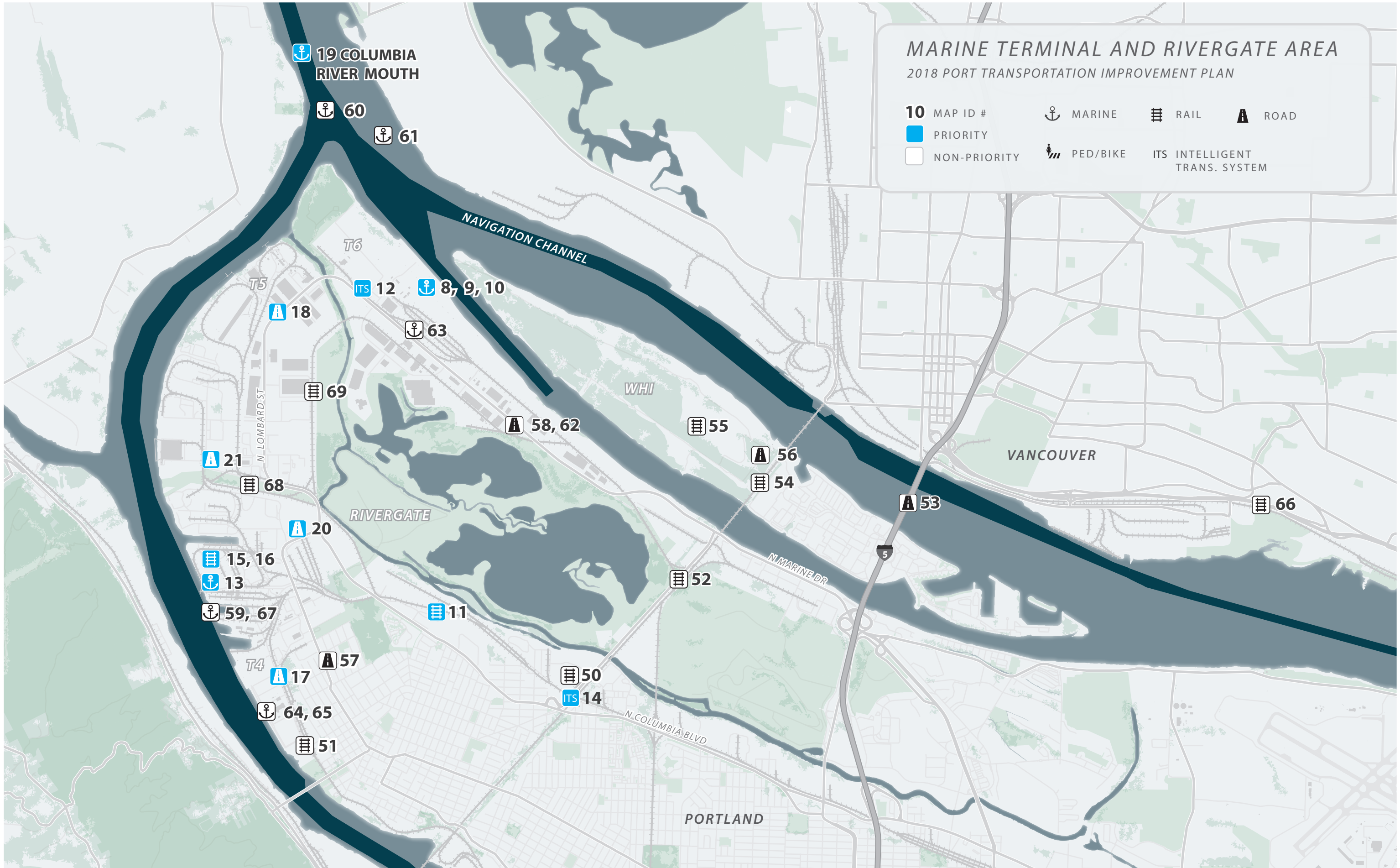
RTP 2040 Constrained

Identified in STIP

MARINE TERMINAL AND RIVERGATE AREA

2018 PORT TRANSPORTATION IMPROVEMENT PLAN

10 MAP ID #	MARINE	RAIL	ROAD
PRIORITY	PED/BIKE	ITS INTELLIGENT TRANS. SYSTEM	
NON-PRIORITY			



Project Name: Kenton Rail Line Upgrade

Map ID: 50	Time Frame (Years): 10 years	Total Cost: \$25,382,000
Project Type: Rail		Year of Cost Estimate: 2003
Operation Area: Rivergate		Federal:
Project Description: Upgrade existing track to second main track with new double track from Peninsula Junction to I-205 and increase track speeds between North Portland, Peninsula Junction, to Reynolds on UP's Kenton Line.		State:
		City:
Purpose: Expand rail capacity and reduce delays for greater efficiency.		SDC:
		Port Share Committed:
JDE NUM:		Port Share Forecasted:
RTP Related: 11356		Private:
Recent Study: I-5 Rail Capacity Study (HDR, 2003)		Other:
Port Strategic Area: Regional Leadership in Transportation		Unfunded: \$25,382,000
<input checked="" type="checkbox"/> RTP 2040 Illustrative	<input type="checkbox"/> Conditioned Project	Estimate Rating:
<input checked="" type="checkbox"/> RTP 2040 Constrained	<input checked="" type="checkbox"/> Identified in STIP	

Project Name: Cathedral Park Quiet Zone

Map ID: 51	Time Frame (Years): 5 years	Total Cost: \$8,200,000
Project Type: Rail		Year of Cost Estimate: 2007
Operation Area: Rivergate		Federal:
Project Description: Address rail switching noise by improving multiple public rail crossings in the St. Johns Cathedral Park area.		State:
		City:
Purpose: To allow auto import operations to continue to grow in N. Portland and improve neighborhood livability.		SDC:
		Port Share Committed:
JDE NUM: 810051		Port Share Forecasted:
RTP Related: 10375		Private:
Recent Study: Cathedral Park Whistle Free Zone Strategic Options, Parametrix (2007)		Other:
Port Strategic Area: Retain and Grow Key Services		Unfunded: \$8,200,000
<input checked="" type="checkbox"/> RTP 2040 Illustrative	<input type="checkbox"/> Conditioned Project	Estimate Rating:
<input checked="" type="checkbox"/> RTP 2040 Constrained	<input type="checkbox"/> Identified in STIP	

Project Name: North Portland Junction

Map ID: 52 **Time Frame (Years):** 10 years
Project Type: Rail
Operation Area: Rivergate
Project Description: Upgrade railroad with revised crossovers, centralized traffic control tie-in and increased turning radius.

Purpose: Accommodate higher rail speeds at the junction which provides greater capacity.

JDE NUM:
RTP Related:
Recent Study: I-5 Rail Capacity Study (HDR, 2003)

Port Strategic Area: Regional Leadership in Transportation
 RTP 2040 Illustrative **Conditioned Project**
 RTP 2040 Constrained **Identified in STIP**

Total Cost: \$9,160,000
Year of Cost Estimate: 2003
Federal:
State:
City:
SDC:
Port Share Committed:
Port Share Forecasted:
Private:
Other:
Unfunded: \$9,160,000
Estimate Rating:

Project Name: I-5 Columbia River Crossing

Map ID: 53 **Time Frame (Years):** 10 years
Project Type: Road
Operation Area: Rivergate
Project Description: Increase the number of lanes and add transit capacity across the river.

Purpose: Increase multi-modal capacity across the Columbia River and relieve congestion.

JDE NUM:
RTP Related: 10893
Recent Study: I-5 Transportation and Trade Partnership Final Strategic Plan (2002)

Port Strategic Area: Regional Leadership in Transportation
 RTP 2040 Illustrative **Conditioned Project**
 RTP 2040 Constrained **Identified in STIP**

Total Cost: \$2,982,000,000
Year of Cost Estimate: 2002
Federal:
State:
City:
SDC:
Port Share Committed:
Port Share Forecasted:
Private:
Other:
Unfunded: \$2,982,000,000
Estimate Rating:

Project Name: West Hayden Island Rail Access

Map ID: 54 **Time Frame (Years):** 20 years
Project Type: Rail
Operation Area: Rivergate
Project Description: Rail access from the mainline to support West Hayden Island development.

Purpose: Advance rail-dependent development.

JDE NUM:
RTP Related: 11353
Recent Study: West Hayden Island Concept Plan 2012

Port Strategic Area: Retain and Grow Key Services
 RTP 2040 Illustrative Conditioned Project
 RTP 2040 Constrained Identified in STIP

Total Cost: \$3,000,000
Year of Cost Estimate:
Federal:
State:
City:
SDC:
Port Share Committed:
Port Share Forecasted:
Private:
Other:
Unfunded: \$3,000,000
Estimate Rating:

Project Name: West Hayden Island Rail Yard

Map ID: 55 **Time Frame (Years):** 20 years
Project Type: Rail
Operation Area: Rivergate
Project Description: Construct rail yard connected to facility trackage.

Purpose: Advance rail development on West Hayden Island.

JDE NUM:
RTP Related: 11354
Recent Study: West Hayden Island Concept Plan 2012

Port Strategic Area: Retain and Grow Key Services
 RTP 2040 Illustrative Conditioned Project
 RTP 2040 Constrained Identified in STIP

Total Cost: \$9,500,000
Year of Cost Estimate:
Federal:
State:
City:
SDC:
Port Share Committed:
Port Share Forecasted:
Private:
Other:
Unfunded: \$9,500,000
Estimate Rating:

Project Name: West Hayden Island Interior Access Road

Map ID: 56	Time Frame (Years): 20 years	Total Cost: \$13,600,000
Project Type: Road		Year of Cost Estimate: 2012
Operation Area: Rivergate		Federal:
Project Description: Construct interior roadway including rail overpass and berth access.		State:
		City:
		SDC:
Purpose: Provide roadway for new West Hayden Island terminal.		Port Share Committed:
		Port Share Forecasted:
JDE NUM:		Private:
RTP Related:		Other:
Recent Study: West Hayden Island Concept Plan 2012		Unfunded: \$13,600,000
Port Strategic Area: Retain and Grow Key Services		Estimate Rating:
<input type="checkbox"/> RTP 2040 Illustrative	<input type="checkbox"/> Conditioned Project	
<input type="checkbox"/> RTP 2040 Constrained	<input type="checkbox"/> Identified in STIP	

Project Name: St. Johns Pedestrian District

Map ID: 57	Time Frame (Years): 5 years	Total Cost: \$3,346,000
Project Type: Road		Year of Cost Estimate: 2005
Operation Area: Rivergate		Federal: \$3,002,365
Project Description: Improvements could include restriping, curb extensions and other pedestrian and bicycle amenities on Lombard St. that do not impede truck movement, as well as intersection improvements and signalization.		State:
		City: \$343,635
		SDC:
Purpose: Maintain truck movement and minimize conflicts with bicycles and pedestrians between Philadelphia Ave. and Lombard St. at Pier Park.		Port Share Committed:
		Port Share Forecasted:
JDE NUM:		Private:
RTP Related: 10182		Other:
Recent Study: St. Johns Truck Strategy Report & Recommendation (2001)		Unfunded:
Port Strategic Area: Regional Leadership in Transportation		Estimate Rating:
<input checked="" type="checkbox"/> RTP 2040 Illustrative	<input type="checkbox"/> Conditioned Project	
<input checked="" type="checkbox"/> RTP 2040 Constrained	<input type="checkbox"/> Identified in STIP	

Project Name: Marine Dr. Improvement Phase 2

Map ID: 58 **Time Frame (Years):** 20 years
Project Type: Road
Operation Area: Rivergate
Project Description: Construct rail overcrossing on Marine Dr.

Purpose: Avoid road/rail conflict.

JDE NUM:
RTP Related: 10379
Recent Study:

Port Strategic Area: Regional Leadership in Transportation
 RTP 2040 Illustrative Conditioned Project
 RTP 2040 Constrained Identified in STIP

Total Cost: \$13,644,200
Year of Cost Estimate: 2003
Federal:
State:
City:
SDC:
Port Share Committed:
Port Share Forecasted:
Private:
Other:
Unfunded: \$13,644,200
Estimate Rating: 3c

Project Name: Willamette River Channel Deepening

Map ID: 59 **Time Frame (Years):** 10 years
Project Type: Marine
Operation Area: Rivergate
Project Description: Deepen the portions of the Willamette River with deep draft infrastructure to -43' where appropriate.

Purpose: To allow Willamette River terminals to also benefit from the Columbia River's new controlling depth.

JDE NUM:
RTP Related:
Recent Study:

Port Strategic Area: Regional Leadership in Transportation
 RTP 2040 Illustrative Conditioned Project
 RTP 2040 Constrained Identified in STIP

Total Cost: \$200,000,000
Year of Cost Estimate:
Federal:
State:
City:
SDC:
Port Share Committed:
Port Share Forecasted:
Private:
Other:
Unfunded: \$200,000,000
Estimate Rating:

Project Name: Lower Columbia River Channel Management Plan

Map ID: 60	Time Frame (Years): 10 years	Total Cost: \$1,500,000
Project Type: Marine		Year of Cost Estimate:
Operation Area: Rivergate		Federal:
Project Description: Establish a plan to manage recurring deposition of Columbia River dredge material from the navigation channel.		State:
		City:
Purpose: Ensure there is sufficient dredged material disposal capacity for a minimum of 20 years.		SDC:
JDE NUM:		Port Share Committed:
RTP Related:		Port Share Forecasted:
Recent Study: 2003 Feasibility Report		Private:
		Other:
Port Strategic Area: Regional Leadership in Transportation		Unfunded: \$1,500,000
<input type="checkbox"/> RTP 2040 Illustrative	<input type="checkbox"/> Conditioned Project	Estimate Rating:
<input type="checkbox"/> RTP 2040 Constrained	<input type="checkbox"/> Identified in STIP	

Project Name: Columbia River Anchorage Improvements

Map ID: 61	Time Frame (Years): 5 years	Total Cost:
Project Type: Marine		Year of Cost Estimate:
Operation Area: Rivergate		Federal:
Project Description: Increase number and size of anchorages up and down the Columbia River.		State:
		City:
Purpose: Allow for additional vessel capacity in the river for efficiency and safety reasons.		SDC:
JDE NUM:		Port Share Committed:
RTP Related:		Port Share Forecasted:
Recent Study: Feasibility Study		Private:
		Other:
Port Strategic Area: Regional Leadership in Transportation		Unfunded:
<input type="checkbox"/> RTP 2040 Illustrative	<input type="checkbox"/> Conditioned Project	Estimate Rating:
<input type="checkbox"/> RTP 2040 Constrained	<input type="checkbox"/> Identified in STIP	

Project Name: T6 Suttle Road Entrance

Map ID: 62 **Time Frame (Years):** 20 years
Project Type: Road
Operation Area: Rivergate
Project Description: Construct access road from terminus of Suttle Road.

Purpose: To support development of east end of T6.

JDE NUM:
RTP Related: 11307
Recent Study: Suttle Road Improvement Options (2008)

Port Strategic Area: Retain and Grow Key Services
 RTP 2040 Illustrative Conditioned Project
 RTP 2040 Constrained Identified in STIP

Total Cost: \$3,000,000
Year of Cost Estimate: 2008
Federal:
State:
City:
SDC:
Port Share Committed:
Port Share Forecasted:
Private:
Other:
Unfunded: \$3,000,000
Estimate Rating: 3c

Project Name: T6 Development Project

Map ID: 63 **Time Frame (Years):** 10 years
Project Type: Marine
Operation Area: Rivergate
Project Description: This program includes an additional truck gate, terminal electrical upgrades, yard cranes, 6,800' arrival and 8,500' departure tracks, pavement and stormwater system renewal.

Purpose: This program is needed to upgrade the terminal.

JDE NUM: 102060, 102056, 1020
RTP Related: 11357, 11207
Recent Study:

Port Strategic Area: Retain and Grow Key Services
 RTP 2040 Illustrative Conditioned Project
 RTP 2040 Constrained Identified in STIP

Total Cost: \$80,000,000
Year of Cost Estimate: 2015
Federal:
State:
City:
SDC:
Port Share Committed:
Port Share Forecasted:
Private:
Other:
Unfunded: \$80,000,000
Estimate Rating:

Project Name: T4 B416 Lay Berth Improvements

Map ID: 64	Time Frame (Years): 5 years	Total Cost: \$1,000,000
Project Type: Marine		Year of Cost Estimate: 2015
Operation Area: Rivergate		Federal:
Project Description: This project will design, permit and install electrical equipment upgrades necessary to allow vessels to lay berth at B416.		State:
		City:
		SDC:
Purpose: The project is needed to allow vessels to lay berth at Berth 416. This will help the Port retain and grow key services and to be a leader in transportation infrastructure.		Port Share Committed:
		Port Share Forecasted:
JDE NUM: 102051		Private:
RTP Related:		Other:
Recent Study:		Unfunded: \$1,000,000
Port Strategic Area: Retain and Grow Key Services		Estimate Rating:
<input type="checkbox"/> RTP 2040 Illustrative	<input type="checkbox"/> Conditioned Project	
<input type="checkbox"/> RTP 2040 Constrained	<input type="checkbox"/> Identified in STIP	

Project Name: Terminal 4 Automobile Yard Expansion

Map ID: 65	Time Frame (Years): 10 years	Total Cost: \$3,000,000
Project Type: Marine		Year of Cost Estimate:
Operation Area: Rivergate		Federal:
Project Description: Design and construct six acres of porous pavement parking for the storage of imported automobiles.		State:
		City:
		SDC:
Purpose: The project will provide additional land to meet auto storage capacity needs of Toyota, supporting the Port's automobile import business line.		Port Share Committed:
		Port Share Forecasted:
JDE NUM:		Private:
RTP Related:		Other:
Recent Study:		Unfunded: \$3,000,000
Port Strategic Area: Regional Leadership in Industrial Lands		Estimate Rating:
<input type="checkbox"/> RTP 2040 Illustrative	<input type="checkbox"/> Conditioned Project	
<input type="checkbox"/> RTP 2040 Constrained	<input type="checkbox"/> Identified in STIP	

Project Name: BNSF Fallbridge Double Tracking

Map ID: 66 **Time Frame (Years):** 10 years
Project Type: Rail
Operation Area: Rivergate
Project Description: Double-track the Fallbridge line to Washougal.

Purpose: Increases capacity of the BNSF east-west mainline serving Port of Portland.

JDE NUM:
RTP Related:
Recent Study: Port Rail Plan

Port Strategic Area: Regional Leadership in Transportation
 RTP 2040 Illustrative Conditioned Project
 RTP 2040 Constrained Identified in STIP

Total Cost: \$72,000,000
Year of Cost Estimate: 2013
Federal:
State:
City:
SDC:
Port Share Committed:
Port Share Forecasted:
Private:
Other:
Unfunded: \$72,000,000
Estimate Rating:

Project Name: Berth Deepening at T2 and T4

Map ID: 67 **Time Frame (Years):** 10 years
Project Type: Marine
Operation Area: Rivergate
Project Description: Deepen berths at Terminals 2 and 4 to allow deeper draft vessels to transit the planned 43 foot channel. Tied to Willamette River Channel Deepening. Cost TBD.

Purpose: Allow better utilization of Panamax-class bulk vessels.

JDE NUM: 101999
RTP Related:
Recent Study:

Port Strategic Area: Retain and Grow Key Services
 RTP 2040 Illustrative Conditioned Project
 RTP 2040 Constrained Identified in STIP

Total Cost:
Year of Cost Estimate:
Federal:
State:
City:
SDC:
Port Share Committed:
Port Share Forecasted:
Private:
Other:
Unfunded:
Estimate Rating:

Project Name: Bonneville Rail Yard Build Out

Map ID: 68 **Time Frame (Years):** 10 years
Project Type: Rail
Operation Area: Rivergate
Project Description: Construct two interior yard tracks and complete the double track lead from the wye at the east end of the yard to Barnes Yard.

Purpose: Add rail staging capacity for South Rivergate.

JDE NUM:
RTP Related: 11652
Recent Study: Port Rail Plan

Port Strategic Area: Regional Leadership in Transportation
 RTP 2040 Illustrative Conditioned Project
 RTP 2040 Constrained Identified in STIP

Total Cost: \$3,600,000
Year of Cost Estimate: 2013
Federal:
State:
City:
SDC:
Port Share Committed:
Port Share Forecasted:
Private:
Other:
Unfunded: \$3,600,000
Estimate Rating: 3c

Project Name: Ramsey Yard Utilization

Map ID: 69 **Time Frame (Years):** 10 years
Project Type: Rail
Operation Area: Rivergate
Project Description: Connect existing set out track with industrial lead.

Purpose: Improve unit train staging capabilities at Ramsey Rail Yard.

JDE NUM:
RTP Related: 11653
Recent Study: Port Rail Plan

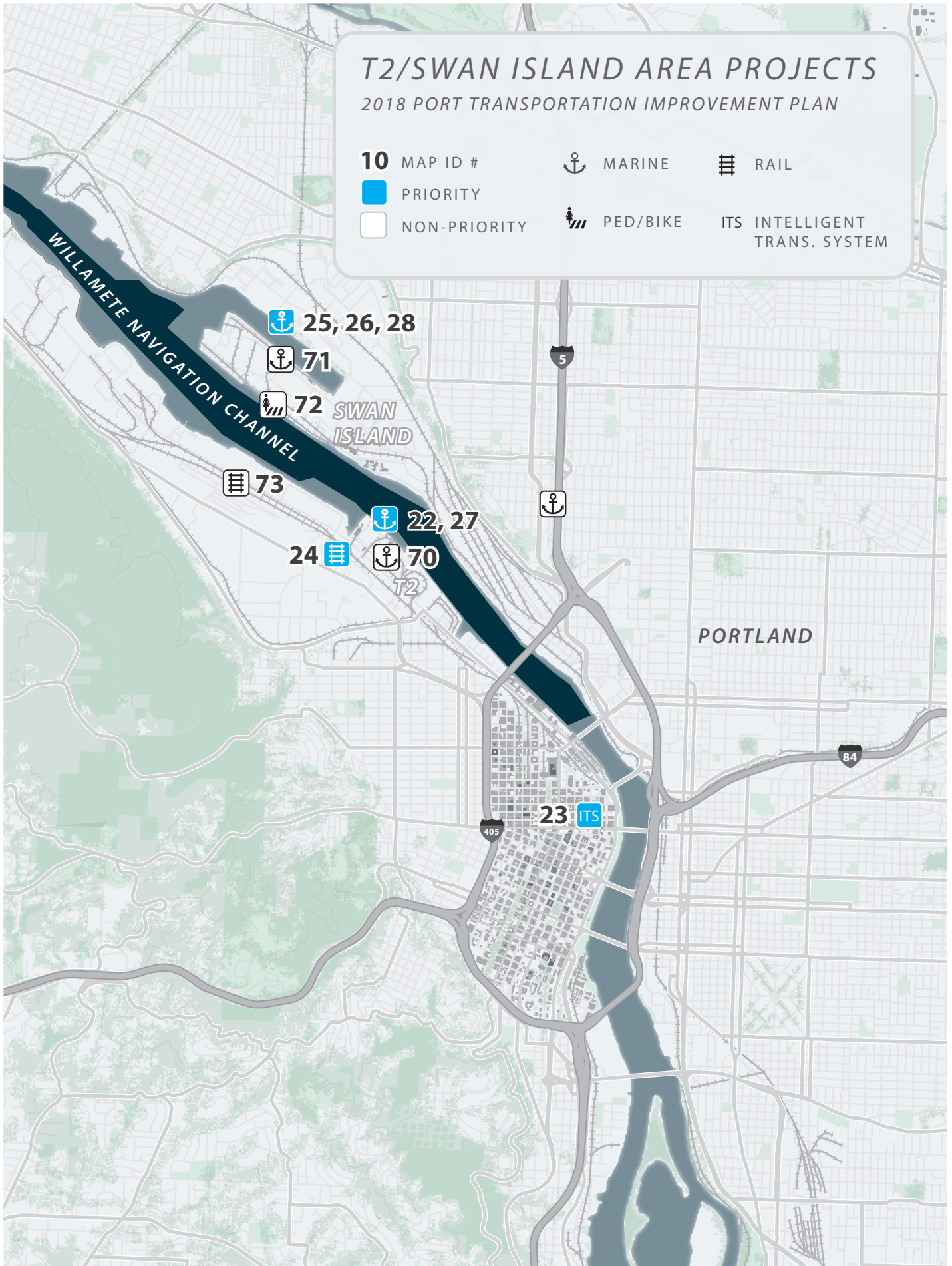
Port Strategic Area: Regional Leadership in Transportation
 RTP 2040 Illustrative Conditioned Project
 RTP 2040 Constrained Identified in STIP

Total Cost: \$1,700,000
Year of Cost Estimate: 2013
Federal:
State:
City:
SDC:
Port Share Committed:
Port Share Forecasted:
Private:
Other:
Unfunded: \$1,700,000
Estimate Rating: 3c

T2/SWAN ISLAND AREA PROJECTS

2018 PORT TRANSPORTATION IMPROVEMENT PLAN

- 10** MAP ID #
- Anchor** MARINE
- Grid** RAIL
- Blue square** PRIORITY
- White square** NON-PRIORITY
- Person/Bike** PED/BIKE
- ITS** INTELLIGENT TRANS. SYSTEM



Project Name: T2 Bulk Terminal

Map ID: 70 **Time Frame (Years):** 5 years
Project Type: Marine
Operation Area: T2/Swan Island
Project Description: Storage, rail receiving, vessel loadout, and conveyance.

Purpose: Capture small lot bulk opportunity.

JDE NUM:
RTP Related:
Recent Study:

Port Strategic Area: Retain and Grow Key Services

- RTP 2040 Illustrative Conditioned Project
- RTP 2040 Constrained Identified in STIP

Total Cost: \$30,000,000
Year of Cost Estimate: 2017
Federal:
State:
City:
SDC:
Port Share Committed:
Port Share Forecasted:
Private:
Other:
Unfunded: \$30,000,000
Estimate Rating:

Project Name: Swan Island Berth 315 Lay Berth Improvements

Map ID: 71 **Time Frame (Years):** 5 years
Project Type: Marine
Operation Area: T2/Swan Island
Project Description: Design, permit berth deepening, electrical upgrades, fendering, and vehicle access for Berth 315.

Purpose: The project is needed to allow vessels to lay berth at B315. This will help the Port retain and grow key services and to be a leader in transportation infrastructure.

JDE NUM:
RTP Related:
Recent Study:

Port Strategic Area: Retain and Grow Key Services

- RTP 2040 Illustrative Conditioned Project
- RTP 2040 Constrained Identified in STIP

Total Cost: \$3,500,000
Year of Cost Estimate: 2016
Federal:
State:
City:
SDC:
Port Share Committed:
Port Share Forecasted:
Private:
Other:
Unfunded: \$3,500,000
Estimate Rating:

Project Name: North Willamette Greenway Trail

Map ID: 72 **Time Frame (Years):** 20 years

Project Type: Bike/Ped

Operation Area: T2/Swan Island

Project Description: Pedestrian and bicycle trail from Kelly Point Park to the Steel Bridge along the Willamette River. The money associated for this project is for a study only.

Purpose: Improve pedestrian and bicycle connectivity in North Portland. Coordinate implementation with the City of Portland.

JDE NUM:

RTP Related: 10355

Recent Study:

Port Strategic Area: Regional Leadership in Transportation

RTP 2040 Illustrative Conditioned Project

RTP 2040 Constrained Identified in STIP

Total Cost: \$500,000

Year of Cost Estimate: 2007

Federal:

State:

City:

SDC:

Port Share Committed:

Port Share Forecasted:

Private:

Other:

Unfunded: \$500,000

Estimate Rating:

Project Name: Portland Terminal Railroad Power Switches

Map ID: 73 **Time Frame (Years):** 5 years

Project Type: Rail

Operation Area: T2/Swan Island

Project Description: Install Dispatcher Controlled Power Switches between Lake Yard and Terminal 2.

Purpose: Will reduce time it takes for trains to travel from Lake Yard to Terminal 2, reducing blockage of mainline.

JDE NUM:

RTP Related:

Recent Study: Port Rail Plan

Port Strategic Area: Regional Leadership in Transportation

RTP 2040 Illustrative Conditioned Project

RTP 2040 Constrained Identified in STIP

Total Cost: \$10,805,000

Year of Cost Estimate:

Federal:

State:

City:

SDC:

Port Share Committed:

Port Share Forecasted:

Private:





Other:

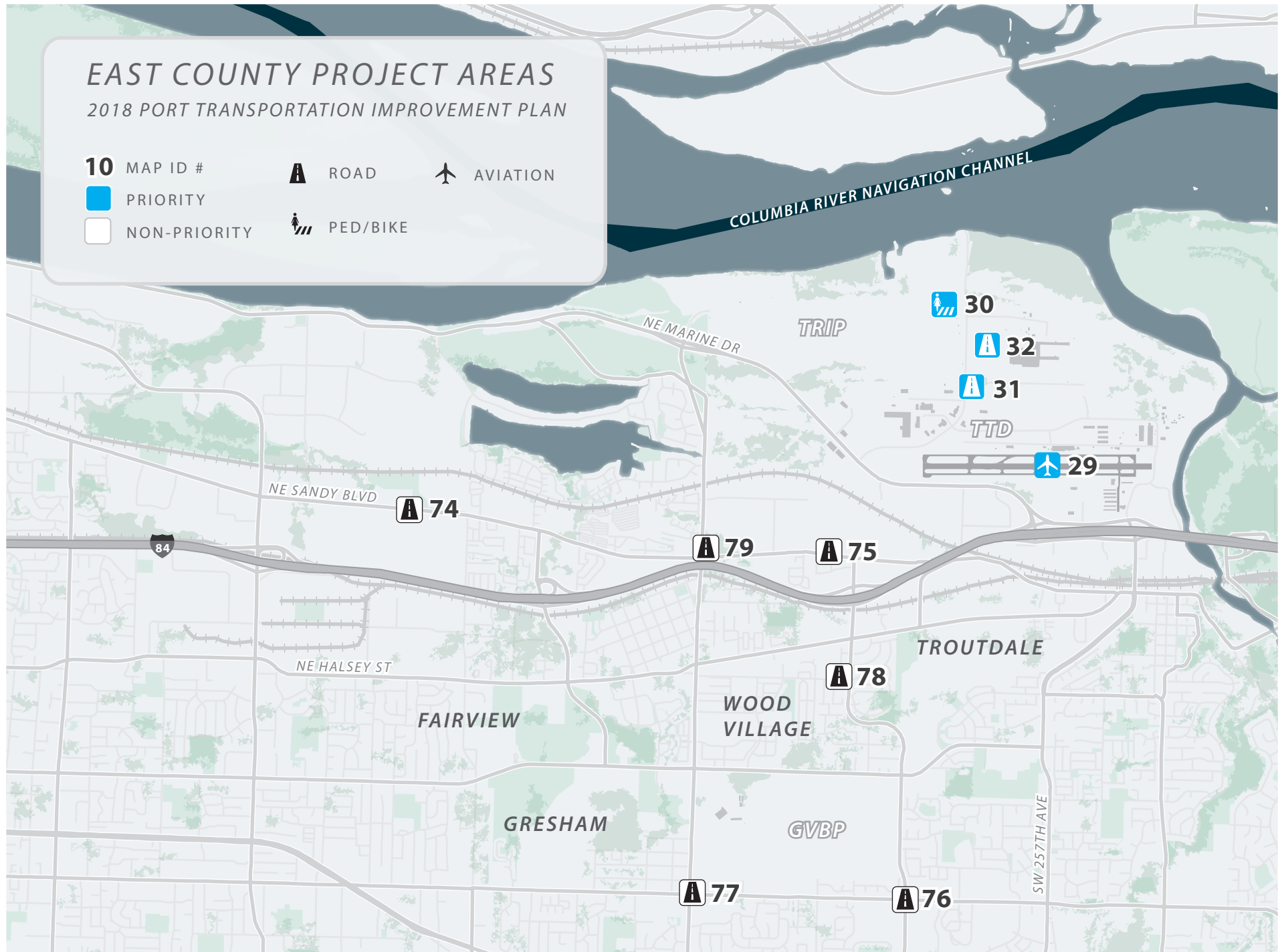
Unfunded: \$10,805,000

Estimate Rating: 3c

EAST COUNTY PROJECT AREAS

2018 PORT TRANSPORTATION IMPROVEMENT PLAN

- 10** MAP ID #
-  PRIORITY
-  NON-PRIORITY
-  ROAD
-  AVIATION
-  PED/BIKE



Project Name: Sandy Blvd. Widening to 4 lanes

Map ID: 74 **Time Frame (Years):** 10 years

Project Type: Road

Operation Area: East County

Project Description: Sandy Blvd. widen to 4 lanes and center turn lane (181st-202nd) with sidewalks and bike lanes.

Purpose: Improve east west capacity and serve developing industrial property.

JDE NUM:

RTP Related: 10443

Recent Study:

Port Strategic Area: Regional Leadership in Transportation

RTP 2040 Illustrative Conditioned Project

RTP 2040 Constrained Identified in STIP

Total Cost: \$10,000,000

Year of Cost Estimate:

Federal:

State:

City:

SDC:

Port Share Committed:

Port Share Forecasted:

Private:

Other:

Unfunded: \$10,000,000

Estimate Rating:

Project Name: Sandy Blvd. Widening to 3 lanes

Map ID: 75 **Time Frame (Years):** 10 years

Project Type: Road

Operation Area: East County

Project Description: Sandy Blvd. widen to 3 lanes (207th to 238th), add sidewalks and bike lanes.

Purpose: Improve east-west capacity and serve adjacent developing industrial property.

JDE NUM:

RTP Related: 10399

Recent Study:

Port Strategic Area: Regional Leadership in Transportation

RTP 2040 Illustrative Conditioned Project

RTP 2040 Constrained Identified in STIP

Total Cost: \$7,438,000

Year of Cost Estimate:

Federal:

State:

City:

SDC:

Port Share Committed:

Port Share Forecasted:

Private:

Other:

Unfunded: \$7,438,000

Estimate Rating:

Project Name: NE Hogan at NE Stark Street

Map ID: 76 **Time Frame (Years):** 5 years
Project Type: Road
Operation Area: East County
Project Description: Add right turn lanes on all approaches and second northbound and southbound left turn lanes.

Purpose: Address intersection capacity affecting access to Gresham Vista Business Park.

JDE NUM:
RTP Related: 10511
Recent Study: East Metro Connections Plan

Port Strategic Area: Regional Leadership in Transportation
 RTP 2040 Illustrative Conditioned Project
 RTP 2040 Constrained Identified in STIP

Total Cost: \$2,020,043
Year of Cost Estimate: 2017
Federal:
State:
City:
SDC:
Port Share Committed:
Port Share Forecasted:
Private:
Other:
Unfunded: \$2,020,043
Estimate Rating:

Project Name: NE 223rd at Stark

Map ID: 77 **Time Frame (Years):** 5 years
Project Type: Road
Operation Area: East County
Project Description: Add eastbound and northbound right turn lanes and southbound left turn lanes.

Purpose: Address intersection capacity affecting access to Gresham Vista Business Park.

JDE NUM:
RTP Related: 10473
Recent Study: East Metro Connections Plan

Port Strategic Area: Regional Leadership in Transportation
 RTP 2040 Illustrative Conditioned Project
 RTP 2040 Constrained Identified in STIP

Total Cost: \$3,507,190
Year of Cost Estimate: 2017
Federal:
State:
City:
SDC:
Port Share Committed:
Port Share Forecasted:
Private:
Other:
Unfunded: \$3,507,190
Estimate Rating:

Project Name: NE 238th Drive: Halsey to Glisan

Map ID: 78 **Time Frame (Years):** 5 years
Project Type: Road
Operation Area: East County
Project Description: Construct improvements for freight by modifying road curvature. Also adds improvements for bikes and pedestrians.
Purpose: Will improve freight access to Gresham Vista Business Park.
JDE NUM:
RTP Related:
Recent Study: East Metro Connections Plan

Port Strategic Area: Regional Leadership in Transportation

- RTP 2040 Illustrative Conditioned Project
- RTP 2040 Constrained Identified in STIP

Total Cost: \$9,769,340
Year of Cost Estimate: 2012
Federal: \$9,769,340
State:
City:
SDC:
Port Share Committed:
Port Share Forecasted:
Private:
Other:
Unfunded:
Estimate Rating:

Project Name: 223rd Avenue Widening

Map ID: 79 **Time Frame (Years):** 5 years
Project Type: Road
Operation Area: East County
Project Description: Widen to three lanes between Halsey St and Marine Drive.
Purpose: Upgrade the facility to major collector urban street standards.
JDE NUM:
RTP Related: 10388, 10389
Recent Study:

Port Strategic Area: Regional Leadership in Transportation

- RTP 2040 Illustrative Conditioned Project
- RTP 2040 Constrained Identified in STIP

Total Cost: \$3,667,000
Year of Cost Estimate:
Federal:
State:
City:
SDC:
Port Share Committed:
Port Share Forecasted:
Private:
Other:
Unfunded: \$3,667,000
Estimate Rating: